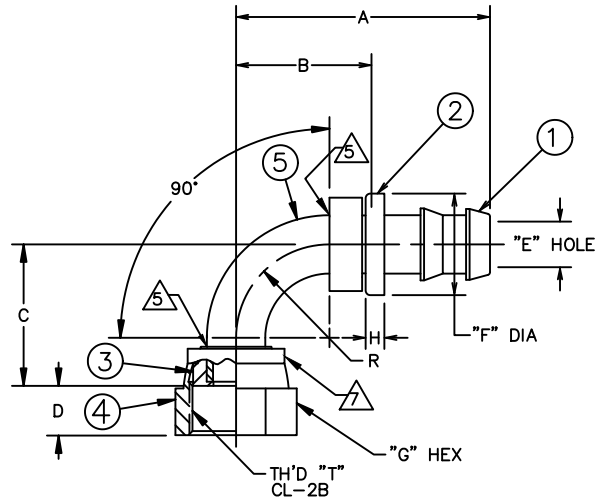


PART NUMBER	TH'D T	A	B	C	D	E	F	G	H	R
		±.062	REF	±.062	REF	REF	±.010	REF	REF	REF
FJ7358-0404S	9/16-18	1.521	.77	.820	.32	.17	.615	.69	.16	.44
FJ7358-0606S	11/16-16	1.695	.83	.911	.38	.24	.725	.81	.16	.50
FJ7358-0804S	13/16-16	1.802	1.05	1.149	.43	.17	.615	.94	.16	.62
FJ7358-0806S	13/16-16	1.910	1.05	1.149	.43	.30	.725	.94	.16	.62
FJ7358-0808S	13/16-16	2.064	1.05	1.149	.43	.37	.870	.94	.16	.62
FJ7358-1212S	1 3/16-12	3.223	1.70	1.915	.57	.58	1.185	1.38	.16	1.25

(F 2) (G 1)

(D 2) (E 2)

REVISIONS			
REV.	DESCRIPTION	DATE	APPROVED
D	REDRAWN ON CAD - LAST REV. "C" (1) 1.159 WAS 1.149 & 1.915 WAS 1.902 (2) NOTES #1(b), 2(b) & 3(b) WERE: "CADMIUM PLATE PER ACES 18P6"	3-20-92	EN-F12791 ER-F12791
E	(1) ADDED NOTE #4	9-23-92 P.T.R.	EN-F13373 DAI-23967
F	(1) REMOVED SEQUENCING FROM PROCESSING NOTES AND ADDED NOTES #5, #6, #7, AND #8 AND FLAGGED NOTES #5 AND #7 (2) ADDED FJ7358-0804S	2007-05-14 RR	0005547-ECO RPS-13551
G	(1) ADDED FJ7358-0806S (2) PER FJ7358-0808S DIMENSION "C" WAS: 1.159	2007-06-13 JL	0006573-ECO RPS-13550
H	(1) 409009-5S WAS FC1386-05S.	2007-07-23 RR	0007552-ECO DP-1299



8. ASSEMBLE CAP. (F 1)

7. CRIMP NUT PER ES 2409P1. (F 1)

6. ZINC PLATE PER ES 2751. (F 1)

5. BRAZE PER ACES 2814. (F 1)

4. CAN BE MADE FROM TUBING PER SPECIFICATIONS ON ELBOW DRAWING. (E 1)

3. (D 2) (F 1)

2. (D 2) (F 1)

1. (D 2) (F 1)

(F 2) (G 1)						(H 1)
FJ7358-1212S	4131-12S	4213-1-12B	FC1500-1212S	FC1473-12S	409009-12S	
FJ7358-0808S	4131-8S	4213-1-8B	FC1500-0808S	FC1473-08S	409009-8S	
FJ7358-0806S	4131-6S	4213-1-6B	FC1500-0808S	FC1473-08S	409009-8S	
FJ7358-0804S	4131-4S	4213-1-4B	FC1500-0808S	FC1473-08S	409009-8S	
FJ7358-0606S	4131-6S	4213-1-6B	FC1500-0606S	FC1473-06S	409009-6S	
FJ7358-0404S	4131-4S	4213-1-4B	FC1500-0405S	FC1473-04S	409009-5S	
PART NUMBER	(1) NIPPLE	(2) HOSE CAP	(3) SHOULDER	(4) NUT	(5) ELBOW	(4)

LIST OF MATERIALS

ITEM NO.	MATERIAL	DRAWN TERRY BAKER		FLUID CONVEYANCE DIVISION	
1	STEEL	CHECKED		 DRAWING TITLE FITTING ASSEMBLY 90°, ORS FEMALE SWIVEL, 2556 HOSE	
2	BRASS	APPROVED			
3	STEEL	RELEASE DATE	1992-03-25		
4	STEEL	EN-F12791			
5	STEEL	ER-F12791			
		THIRD ANGLE PROJECTION	SIZE	DRAWING NUMBER	REV
			A2	FJ7358-S	H
		SCALE	DIST	CAGE CODE	SHEET
			U	01276	

THE REPRODUCTION, DISTRIBUTION AND UTILIZATION OF THIS DOCUMENT AS WELL AS THE COMMUNICATION OF ITS CONTENTS TO OTHERS WITHOUT EXPLICIT AUTHORIZATION IS PROHIBITED. OFFENDERS WILL BE HELD LIABLE FOR THE PAYMENT OF DAMAGES. ALL RIGHT RESERVED IN THE EVENT OF THE GRANT OF A PATENT, UTILITY MODEL OR DESIGN. (PER ISO 18016)

FJ7358-S
REV. H
SH.
Dwg. Inc.