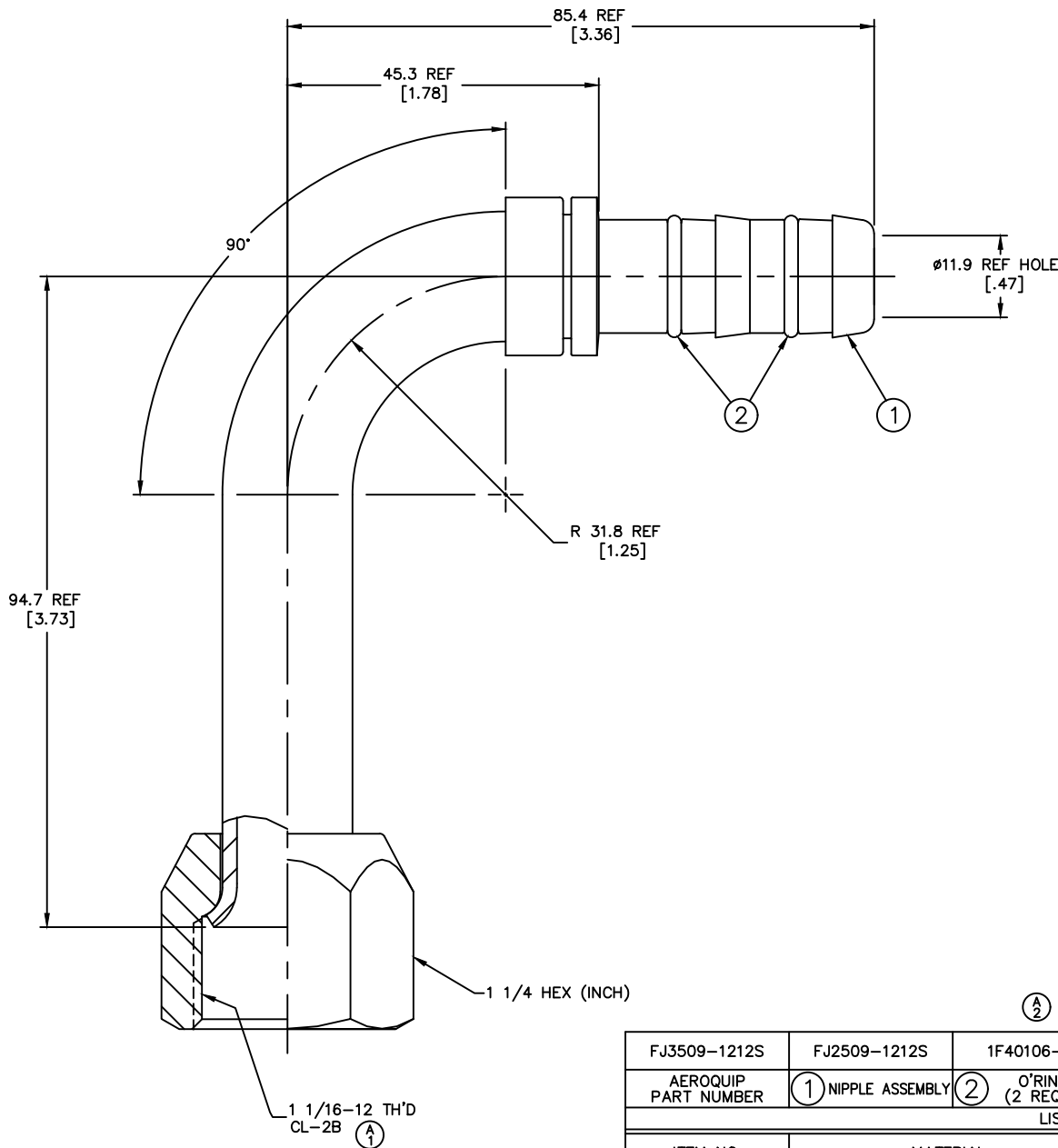


REVISIONS			
REV	DESCRIPTION	DATE	APPROVED
A	(1) WAS 1 1/16-18 TH'D CL-2B (2) WAS 409008-12S	2001-09-14	EN-F22184 DAS/W.R.H. DP-24901



2. DIMENSIONS ARE IN MILLIMETERS [INCHES].

1. LUBRICATE O'RINGS AND ASSEMBLE AS SHOWN

FJ3509-1212S	FJ2509-1212S	1F40106-12			
AEROQUIP PART NUMBER	① NIPPLE ASSEMBLY	② O'RING (2 REQ'D)			
LIST OF MATERIALS					
ITEM NO.	MATERIAL	DRAWN D.BAILEY	FLUID CONVEYANCE DIVISION		
1	STEEL	CHECKED W.R.HYDE	 DRAWING TITLE <b>FITTING ASSEMBLY</b> 90°, SAE 37° SWIVEL, GH134 HOSE		
2	HNBR	APPROVED D.SHOWALTER			
		RELEASE DATE 2001-09-05			
		EN-F22134 DP-1256			
		THIRD ANGLE PROJECTION	SIZE A2	DRAWING NUMBER FJ3509-1212S	REV A
		ITEM TYPE:	SCALE 2:1	DIST U	CAGE CODE 01276
				SHEET	

METRIC

DWG. NO. FJ3509-1212S