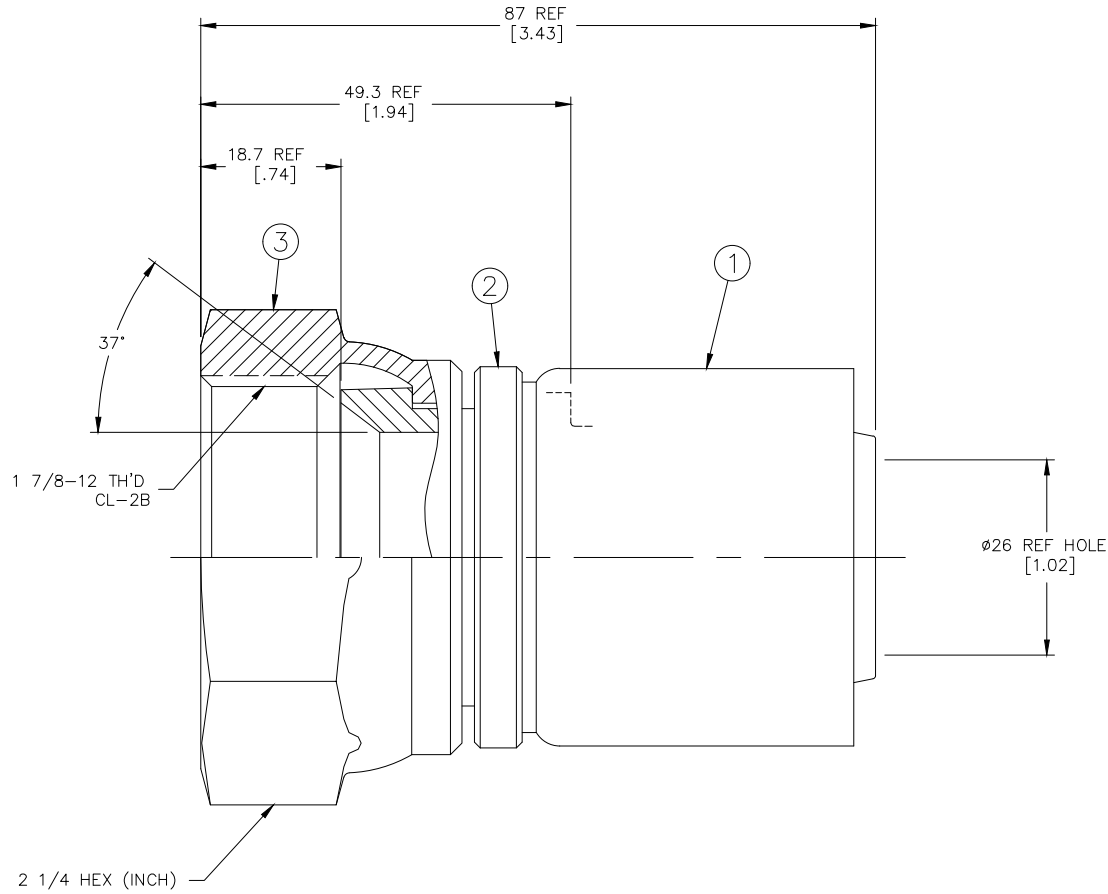


| REVISIONS | | | |
|-----------|----------------------------------------------------|-----------------------|----------------------|
| REV | DESCRIPTION | DATE | APPROVED |
| C | REACTIVATED AS PER REV "A" TO SHOW AEROQUIP DESIGN | 2006-05-12 RHJ/KBM | EN-F30034 DP-1299 |



METRIC

- DIMENSIONS ARE IN MILLIMETERS [INCHES].
- THERE SHOULD BE NO SOCKET MOVEMENT ON THE NIPPLE AFTER CRIMPING.
- PROCESS AS FOLLOWS:
 - CRIMP NUT PER ACES 2813.
 - CRIMP SOCKET PER ACES 2409P17.

| FJ3114-2424S | FW1186-24S | FW1231-2424S | 210204-24S | | |
|-------------------|------------|----------------------------|---------------------------------------------------------------------------------------------|--------------------------------|--------------------|
| PART NUMBER | ① SOCKET | ② NIPPLE | ③ NUT | | |
| LIST OF MATERIALS | | | | | |
| ITEM NO. | MATERIAL | DRAWN T. HARTFORD | FLUID CONVEYANCE DIVISION DRAWING TITLE FITTING ASSEMBLY SAE 37° SWIVEL, 1503 HOSE | | |
| 1 | STEEL | CHECKED D. BAILEY | | | |
| 2 | STEEL | APPROVED R.D. GARRETT | | | |
| 3 | STEEL | RELEASE DATE 2000-05-25 | | | |
| | | EN-F19970 DP-1290 | SIZE A2 | DRAWING NUMBER FJ3114-2424S | REV C |
| | | THIRD ANGLE PROJECTION | SCALE 2/1 | DIST U | CAGE CODE 01276 |
| | | ITEM TYPE: EDEA | SHEET | | |