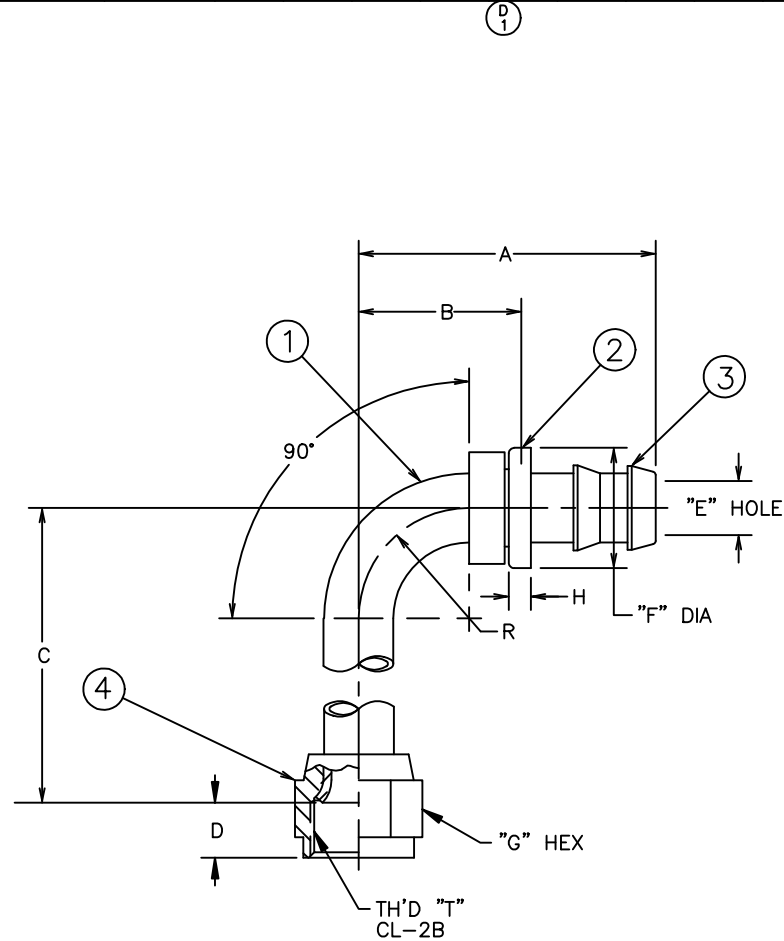


PART NUMBER	TH'D "T"	A ±.062	B REF	C ±.062	D REF	E REF	F ±.010	G REF	H REF	R REF
FC5852-0404S	7/16-20	1.454	.70	1.800	.40	.15	.615	.56	.16	.38

REVISIONS			
REV.	DESCRIPTION	DATE	APPROVED
D	REDRAWN ON CAD - LAST REV. "C" (1) .15 WAS .17 (2) NOTE #1(b) WAS: "CADMIUM PLATE PER ACES 16P6"	3-20-92	EN-F12791 ER-F12791
E	(1) ADDED NOTE #3	9-22-92 P.T.R.	EN-F13373 DAI-23967



REV. E
SH.
FC5852-S
DWG. NO.

CONVERTED DRAWING CADAM to AutoCAD 8/98

- △ CAN BE MADE FROM TUBING PER SPECIFICATIONS ON ELBOW DRAWING. (E1)
- FOR OTHER SIZES IN SAE 37, SEE 190465-S.
 - PROCESS AS FOLLOWS:
 - BRAZE PER ACES 67P3 OR P26. (D2)
 - ZINC PLATE PER ACES 16P47.
 - ASSEMBLE NUT AND FLARE PER FF481.
 - ASSEMBLE CAP.

THE REPRODUCTION, DISTRIBUTION AND UTILIZATION OF THIS DOCUMENT AS WELL AS THE COMMUNICATION OF ITS CONTENTS TO OTHER WITHOUT EXPLICIT AUTHORIZATION IS PROHIBITED. OFFENDERS WILL BE HELD LIABLE FOR THE PAYMENT OF DAMAGES. ALL RIGHT RESERVED IN THE EVENT OF THE GRANT OF A PATENT, UTILITY MODEL OR DESIGN. (PER ISO 16016)

FC5852-0404S	409008-4S	4213-1-4B	4131-4S	210221-4S
PART NUMBER	(1) ELBOW (△)	(2) HOSE CAP	(3) NIPPLE	(4) NUT
LIST OF MATERIALS				
ITEM NO.	MATERIAL	DRAWN TERRY BAKER	DATE 3-20-92	FLUID CONVEYANCE DIVISION DRAWING TITLE FITTING ASSEMBLY 90°, UNIVERSAL (SAE 37° OR SAE 45°) SWIVEL, 2556 HOSE SIZE (CAGE) CODE NO. DRAWING NUMBER C 01276 FC5852-S SHEET
1	STEEL	CHECKED R.D. GARRETT	DATE 3-25-92	
2	BRASS	APPROVED R.D. GARRETT	DATE 3-25-92	
3	STEEL	RELEASED EN-F12791	DATE 3-25-92	
4	STEEL	PROJECT NO. ER-F12791	APC NO.	
		DESIGN APPROVED		
		APPROVED		