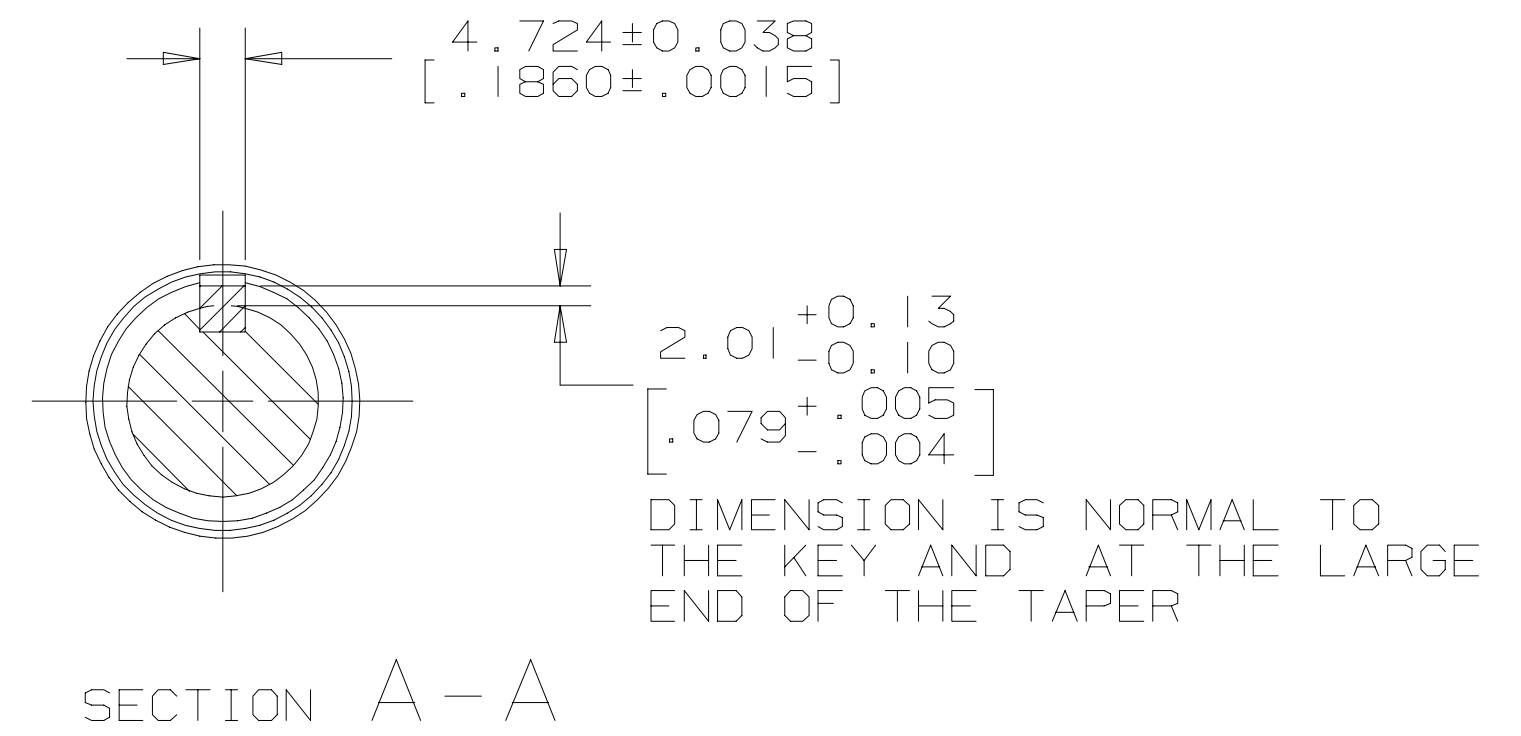
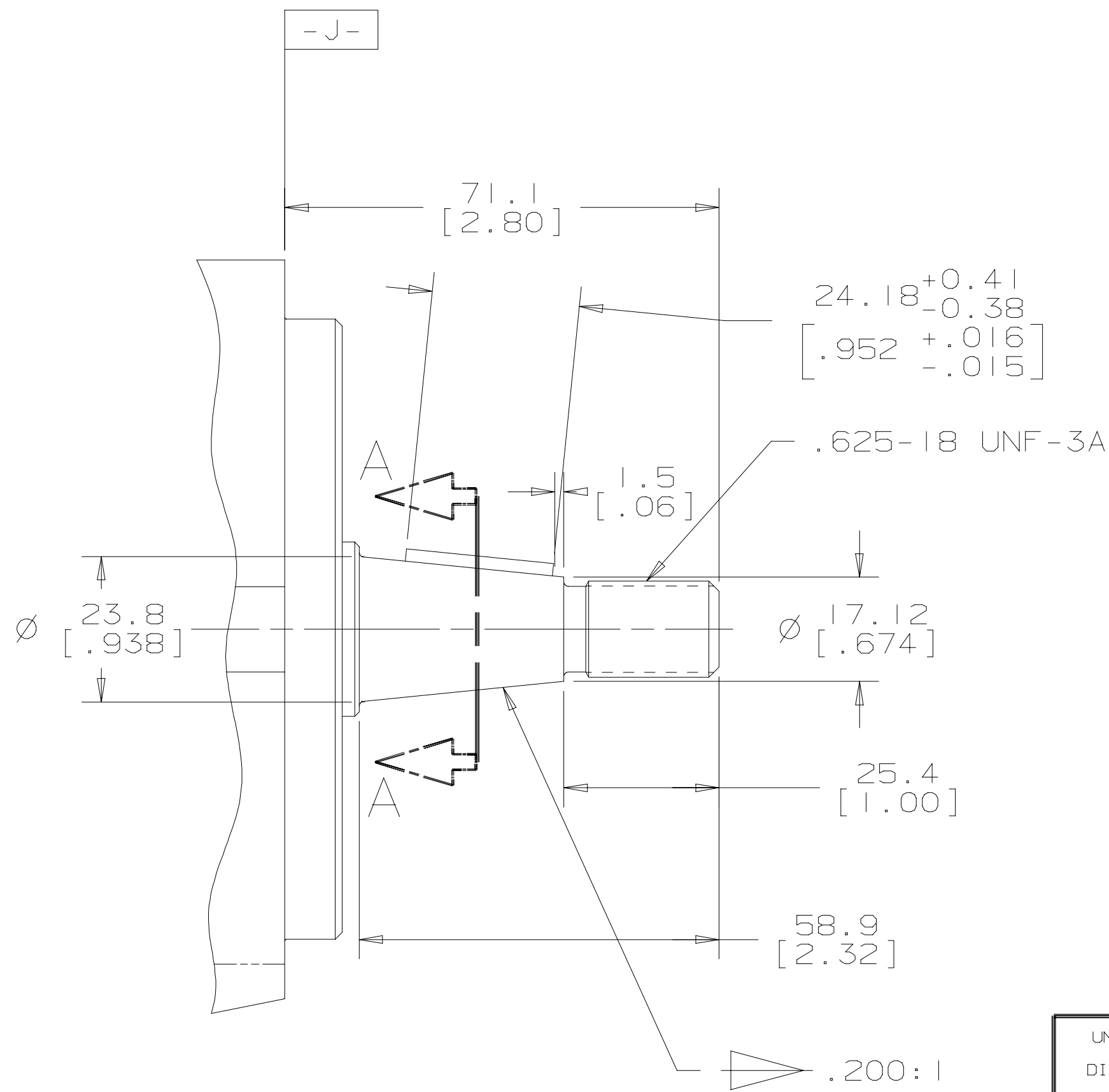


REV	DESCRIPTION	BY	DATE	ECN
A	ENGINEERING RELEASE	BRT	6-14-94	MI1605
B	-1) .952 WAS 9.52 -2) 4.724±.038 WAS .4.724±.038	MJZ	8-24-94	25869
C	TITLE WAS INPUT SHAFT INSTALLATION	JMS	3-27-96	27970



GH

UNLESS OTHERWISE SPECIFIED ALL DIMENSIONS ARE IN INCHES <input type="checkbox"/> MILLIMETERS <input checked="" type="checkbox"/> TOLERANCES .X ± --- .XX ± REF .XXX ± REF < ± --- UNSPECIFIED RADII ARE --- UNSPECIFIED DRAFT ANGLES ARE --- DRAWING FORMAT CADD <input checked="" type="checkbox"/> MANUAL <input type="checkbox"/>	DRAWING BASED ON ANSI Y14.5M-1982		
	THE REPRODUCTION, DISTRIBUTION, AND UTILIZATION OF THIS DOCUMENT, AS WELL AS THE COMMUNICATION OF ITS CONTENTS TO OTHERS WITHOUT EXPLICIT AUTHORIZATION IS PROHIBITED. OFFENDERS WILL BE HELD LIABLE FOR THE PAYMENT OF DAMAGES. ALL RIGHTS RESERVED IN THE EVENT OF THE GRANT OF A PATENT, UTILITY MODEL, OR DESIGN. (PER ISO 16016)		
	DRAWN BY/DATE BRT 6-16-94 CHECKED BY/DATE EGS 6-23-94 ENGRG BY/DATE DMW 6-24-94 METALLURGY BY/DATE ---	MATERIAL/HEAT TREAT TITLE SHAFT INSTALLATION	
	 THIRD ANGLE PROJECTION	MICROINCHES <input type="checkbox"/> MICROMETERS <input type="checkbox"/> ARITHMETICAL AVERAGE <input checked="" type="checkbox"/>	NUMBER A-290-080 SCALE 1/1 SHEET 1 OF 1
	DO NOT SCALE		