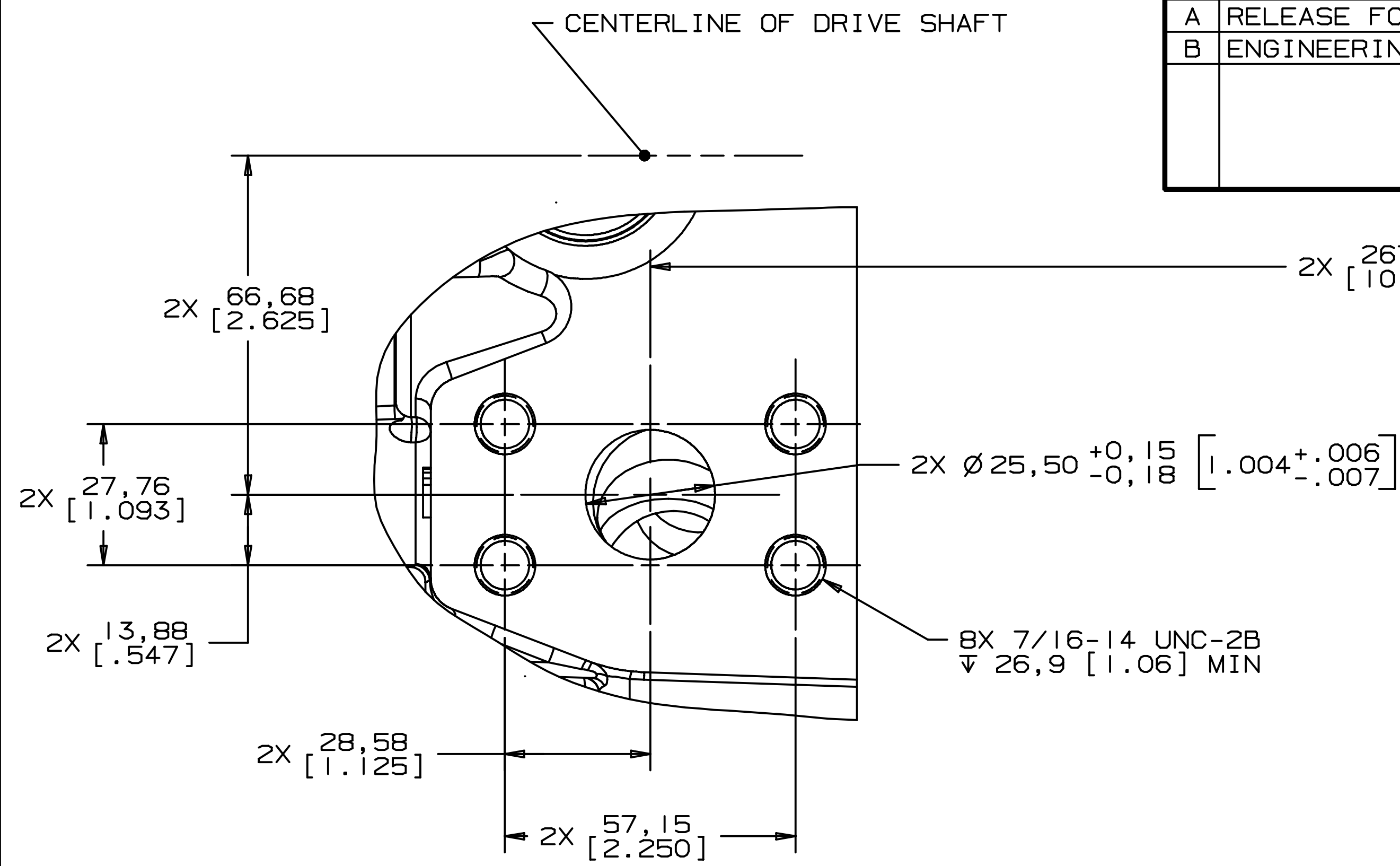


REV	DESCRIPTION	BY	CHK	DATE	ECN
A	RELEASE FOR SAMPLES AND ESTIMATE	DLM	RLL	8/24/99	M22090
B	ENGINEERING RELEASE	JED	SDR	2-7-00	M22875



1.00 SAE 4-BOLT SPLIT FLANGE PORT  
HIGH PRESSURE SERIES (CODE 62)

54-64

UNLESS OTHERWISE SPECIFIED ALL DIMENSIONS ARE IN INCHES <input type="checkbox"/> MILLIMETERS <input checked="" type="checkbox"/>	DRAWING BASED ON ANSI Y14.5M-1982	
	THE REPRODUCTION, DISTRIBUTION, AND UTILIZATION OF THIS DOCUMENT, AS WELL AS THE COMMUNICATION OF ITS CONTENTS TO OTHERS WITHOUT EXPLICIT AUTHORIZATION IS PROHIBITED. OFFENDERS WILL BE HELD LIABLE FOR THE PAYMENT OF DAMAGES. ALL RIGHTS RESERVED IN THE EVENT OF THE GRANT OF A PATENT, UTILITY MODEL, OR DESIGN. (PER ISO 16016)	
TOLERANCES .X ± --- .XX ± --- .XXX ± --- < ± ---	DRAWN BY/DATE DLM 9/1/99 CHECKED BY/DATE RLL 9/7/99 ENGRG BY/DATE MEL 9/8/99 METALLURGY BY/DATE ---	MATERIAL/HEAT TREAT  TITLE HIGH PRESSURE PORT INSTALLATION
UNSPECIFIED RADII ARE ---  UNSPECIFIED DRAFT ANGLES ARE ---	THIRD ANGLE PROJECTION DO NOT SCALE	MICROINCHES <input type="checkbox"/> MICROMETERS <input type="checkbox"/> (MICROINCHES) ARITHMETICAL AVERAGE <input checked="" type="checkbox"/>
DRAWING FORMAT CADD <input checked="" type="checkbox"/> MANUAL <input type="checkbox"/>	NUMBER A-993-005	SCALE 1/1 SHEET 1 OF 1

