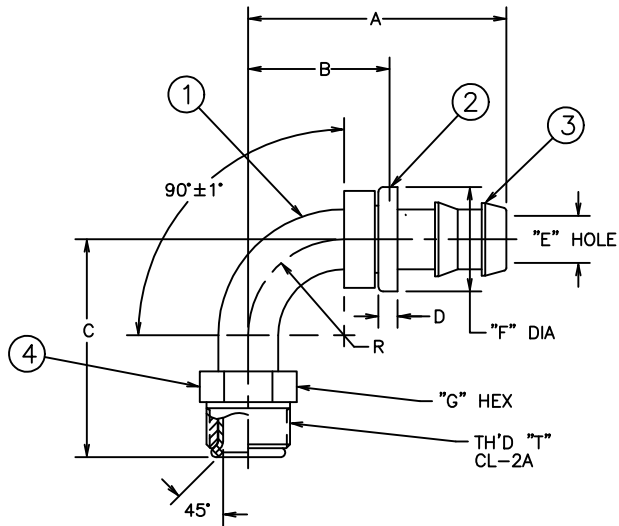


PART NUMBER	TH'D "T"	A REF	B REF	C REF	D REF	E REF	F ±.010 REF	G REF	R REF
190327-4S	7/16-24	2.08	1.33	1.69	.16	.17	.615	.44	1.00
190327-6S	5/8-18	2.20	1.33	1.73	.16	.30	.725	.62	1.00

REVISIONS			
REV.	DESCRIPTION	DATE	APPROVED
G	REDRAWN ON CAD - LAST REV. "F" (1) NOTE #1(d) WAS: "CADMIUM PLATE PER ACES 16P6"	3-18-92	EN-F12791 ER-F12791



2. LAST DASH SIZE INDICATES LENGTH AFTER FLARING.

1. PROCESS AS FOLLOWS:
- (a) ASSEMBLE NUT AND NIPPLE ON TUBE.
 - (b) BRAZE PER ACES 67P3 OR P26.
 - (c) BEND TO DIMENSIONS SHOWN.
 - (d) ZINC PLATE PER ACES 16P47.
 - (e) ASSEMBLE CAP.

(G)

THE REPRODUCTION, DISTRIBUTION AND UTILIZATION OF THIS DOCUMENT AS WELL AS THE COMMUNICATION OF ITS CONTENTS TO OTHER WITHOUT EXPLICIT AUTHORIZATION IS PROHIBITED. OFFENDERS WILL BE HELD LIABLE FOR THE PAYMENT OF DAMAGES. ALL RIGHT RESERVED IN THE EVENT OF THE GRANT OF A PATENT, UTILITY MODEL OR DESIGN. (PER ISO 16016)

190327-6S	400112-6S-2.414	4213-1-6B	4131-6S	186-1299-6
190327-4S	400112-4S-2.374	4213-1-4B	4131-4S	186-1299-4
AEROQUIP PART NUMBER	① FLARED TUBE	② HOSE CAP	③ NIPPLE	④ NUT
LIST OF MATERIALS				
ITEM NO.	MATERIAL	DATE	DRAWING TITLE	
1	STEEL	3-18-92	90° SAE MALE INVERTED FLARE, 2556 HOSE	
2	BRASS	3-25-92	DRAWING NUMBER	
3	STEEL	3-25-92	190327-S	
4	STEEL	3-25-92	SHEET	
APPROVED		U	SHEET	

99
F2

REV. G
SH.

190327-S

DWG. NO.

CONVERTED DRAWING CADAM to AutoCAD 9/98

FLUID CONVEYANCE DIVISION