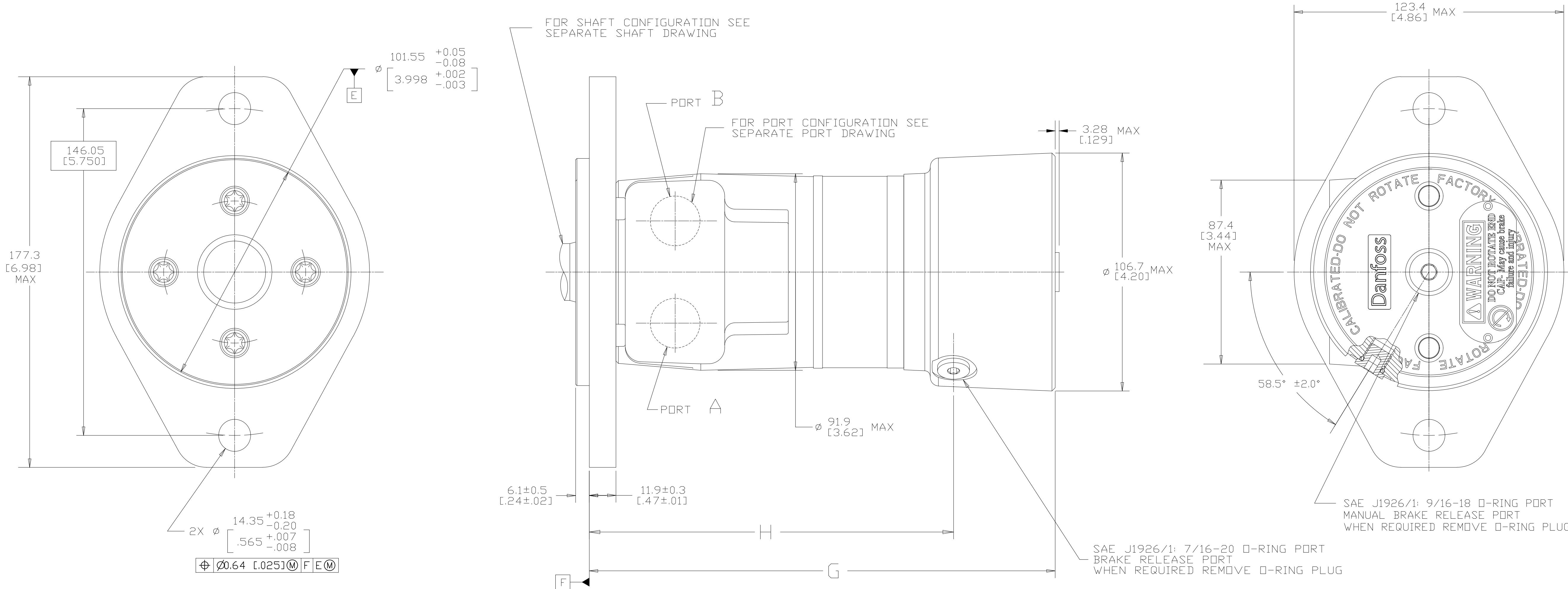


DISPL CODE	G MAX	H
022	186.9 [7.36]	140.6±0.9 [5.54±.03]
025	187.8 [7.39]	141.2±0.9 [5.56±.03]
030	189.3 [7.45]	143.0±0.9 [5.63±.03]
036	191.1 [7.52]	144.8±0.9 [5.70±.03]
040	192.3 [7.57]	146.0±0.9 [5.75±.03]
049	195.0 [7.68]	148.7±0.9 [5.85±.03]
062	198.9 [7.83]	152.6±0.9 [6.00±.03]
080	204.3 [8.04]	158.0±0.9 [6.22±.03]
096	209.2 [8.24]	162.9±0.9 [6.41±.03]
119	215.9 [8.50]	169.6±0.9 [6.68±.03]
149	225.0 [8.86]	178.6±0.9 [7.03±.03]
187	236.3 [9.31]	190.0±0.9 [7.48±.03]
226	248.0 [9.76]	201.7±0.9 [7.94±.03]

REV	DESCRIPTION	BY	CHK	DATE	ECN / MPS
A	ENGINEERING RELEASE	SMM		08-12-04	49031
B	-1>(2C)123.4[4.86]MAX WAS 122.2[4.81]MAX -2>(8C)177.3[6.98]MAX WAS 177.1[6.97]MAX	PM		04-07-04	46856
C	-1>(2C)REVISED PICTORIALY -2>UPDATED AS PER CURRENT STANDARD	YIS	SMT	06-28-11	0032984
D	-1>(8D) REVISED VALUES OF G MAX -2>(7B) ⊕ ∅0.64 [0.025] M F E M WAS ⊕ ∅0.64 [0.025] M E M F -3>(3C) 87.4[3.44] WAS 88.9 [3.50] -4>(3B) 58.5°±2.0° WAS 58.5° -4>(2C)2B) REVISED PICTORIALY	CSG	AAB	04-16-12	M85382
E	-1>(2C)3C)REVISED PICTORIALY -2>(2B)WAS SAE J1926/1: 7/16-20... -3>(3C)ADDED DIM 3.28 [1.29] MAX	SB	CSG	05-12-15	M96754



NOTE

1 ROTATION STANDARD WHEN FACING SHAFT END OF MOTOR SHAFT TO ROTATE CLOCKWISE WHEN PORT "A" IS PRESSURIZED COUNTERCLOCKWISE WHEN PORT "B" IS PRESSURIZED REVERSE WHEN FACING SHAFT END OF MOTOR SHAFT TO ROTATE CLOCKWISE WHEN PORT "B" IS PRESSURIZED COUNTERCLOCKWISE WHEN PORT "A" IS PRESSURIZED

2 MOUNTING TYPE DA = 2 BOLT STD: ∅ 101.60 [4.000] X 6.10 [0.240] PILOT, ∅ 14.35 [0.565] MOUNTING HOLES DN ∅ 146.05 [5.750] B.C. (SAE B)

REVIEWED FOR CLASSIFICATION PER ESP-042

DRAWING BASED ON ASME Y14.5M-1994

UNLESS OTHERWISE SPECIFIED ALL DIMENSIONS ARE IN INCHES [MILLIMETERS]

TOLERANCES

UNSPECIFIED RADII ARE: ---

UNSPECIFIED DRAFT ANGLES ARE: ---

THIRD ANGLE PROJECTION DO NOT SCALE

THE REPRODUCTION, DISTRIBUTION AND UTILIZATION OF THIS DOCUMENT AS WELL AS THE COMMUNICATION OF ITS CONTENTS TO OTHER WITHOUT EXPLICIT AUTHORIZATION IS PROHIBITED. OFFENDERS WILL BE HELD LIABLE FOR THE PAYMENT OF DAMAGES. ALL RIGHT RESERVED IN THE EVENT OF THE GRANT OF A PATENT, UTILITY MODEL OR DESIGN. (PER ISO 16016)

DANFOSS

DRAWN BY/DATE SMM 08-17-04

CHECKED BY/DATE AGJ 08-17-04

ENGRG BY/DATE JDM 08-17-04

MATERIAL/HEAT TREAT ---

TITLE T MOTOR W/BRAKE INSTALLATION

NUMBER A-1480-004

SCALE 1/1 SHEET 1 OF 1