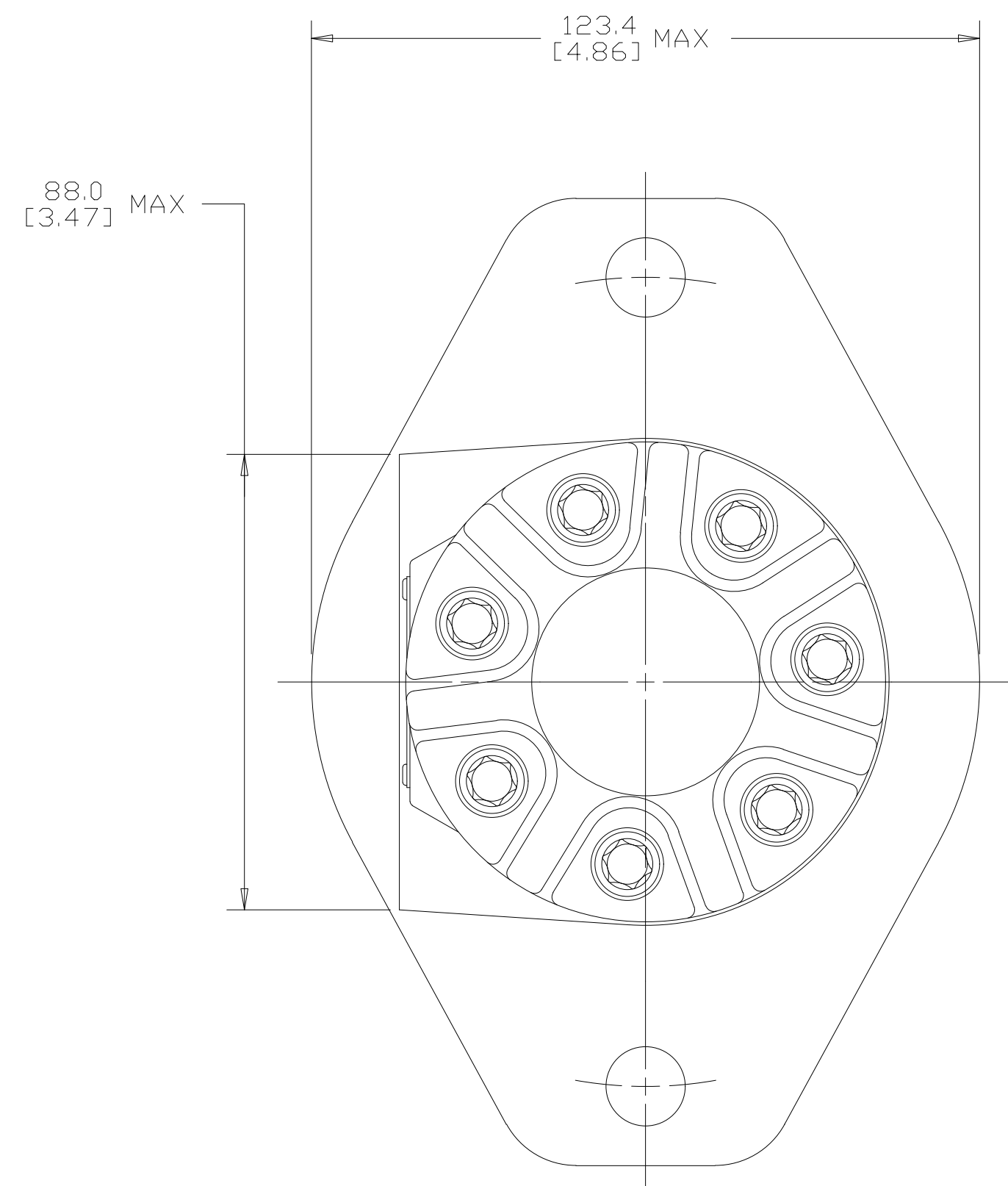
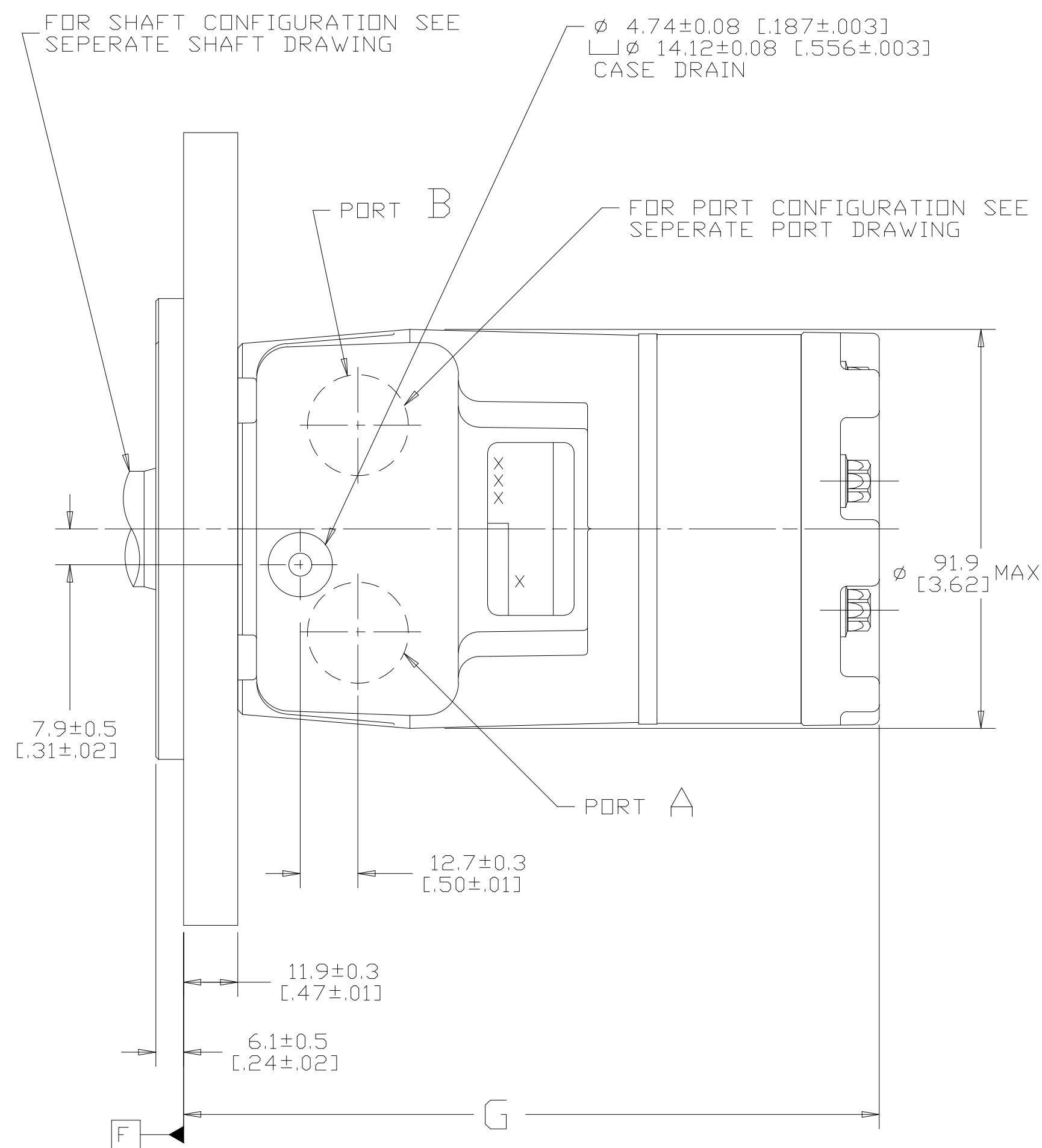
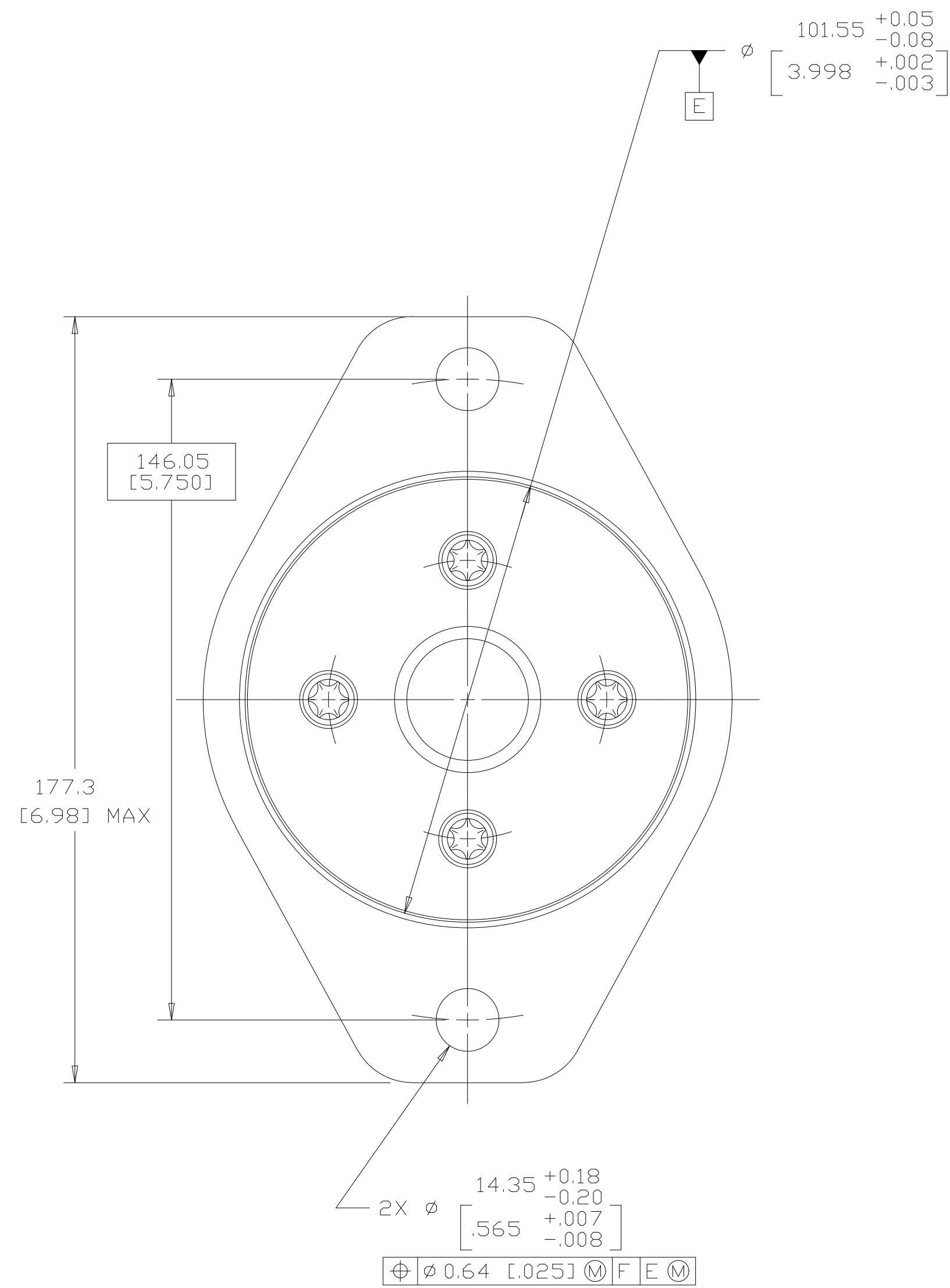


DISPL CODE	G MAX
018	128.9 [5.08]
022	128.9 [5.08]
025	129.8 [5.11]
030	131.3 [5.17]
036	133.1 [5.24]
040	134.3 [5.29]
049	137.0 [5.40]
062	140.9 [5.55]
080	146.3 [5.76]
096	151.2 [5.95]
119	157.0 [6.22]
149	167.0 [6.57]
187	178.4 [7.02]
226	190.0 [7.48]
298	211.7 [8.33]



- NOTE
- 1 ROTATION
STANDARD WHEN FACING SHAFT END OF MOTOR SHAFT TO ROTATE CLOCKWISE WHEN PORT "A" IS PRESSURIZED
COUNTERCLOCKWISE WHEN PORT "B" IS PRESSURIZED

REVERSE WHEN FACING SHAFT END OF MOTOR SHAFT TO ROTATE COUNTERCLOCKWISE WHEN PORT "B" IS PRESSURIZED
CLOCKWISE WHEN PORT "A" IS PRESSURIZED
 - 2 MOUNTING FLANGE
DD = STANDARD, 2 BOLT: Ø 101.6 [4.00] X 6.1 [0.24] PILOT
Ø 14.35 [0.565] HOLES ON Ø 146.0 [5.75] BOLT CIRCLE (SAE B)
 - 3 CASE DRAIN
03 = MANIFOLD CASE DRAIN

REV	DESCRIPTION	BY	CHK	DATE	ECN / MPS
A	ENGINEERING RELEASE	VVB		06-01-05	M64823
B	-1) (8D) UPDATED TABLE FOR DISPL CODE -2) (6A) NOTE 2 MOUNTING FLANGE WAS "H"	PM		03-27-07	0004355
C	-1) (8D) REVISED TABULATION BLOCK -2) (6B) Ø 0.64 [0.025] M F E M WAS Ø 0.64 [0.025] M F E M -3) (6A) NOTE 3 WAS CASE DRAIN 3 = MANIFOLD -4) (3C) 88.0 [3.47] WAS 88.9 [3.50] -5) REDRAWN TO D SIZE TEMPLATE -6) DRAWING UPDATED TO ASME Y14.5-2009 STANDARD -7) REV B, -1) WAS "(4D)..." -8) REV B, -2) WAS "(4A)..." -9) (4C) REVISED PICTORIALY -9) (5B) 7.9 ± 0.5 [0.31 ± 0.02] WAS 7.9 ± 0.3 [0.31 ± 0.01]	CSG	AAB	10-14-13	M90703
D	(6A) NOTE 3 WAS CASE DRAIN: 3...	SSP	YUP	12-26-15	0068068_2

REVIEWED FOR CLASSIFICATION PER ESP-042

DRAWING BASED ON ASME Y14.5-2009

UNLESS OTHERWISE SPECIFIED ALL DIMENSIONS ARE IN INCHES MILLIMETERS

TOLERANCES

.XX	± .03
.XXX	± .010
<	± 2°

UNSPECIFIED RADII ARE: -

UNSPECIFIED DRAFT ANGLES ARE: °

THIRD ANGLE PROJECTION

D SIZE DO NOT SCALE

THE REPRODUCTION, DISTRIBUTION AND UTILIZATION OF THIS DOCUMENT AS WELL AS THE COMMUNICATION OF ITS CONTENTS TO OTHER WITHOUT EXPLICIT AUTHORIZATION IS PROHIBITED. OFFENDERS WILL BE HELD LIABLE FOR THE PAYMENT OF DAMAGES. ALL RIGHT RESERVED IN THE EVENT OF THE GRANT OF A PATENT, UTILITY MODEL OR DESIGN. (PER ISO 16016)

DRAWN BY/DATE: VVB 6/6/05
CHECKED BY/DATE: ML 6/7/05
ENGRG BY/DATE: LTH 6/8/05
METALLURGY BY/DATE: ---

MATERIAL/HEAT TREAT: -
TITLE: T MOTOR INSTALLATION

NUMBER: A-821-092
SCALE: 1/1 SHEET 1 OF 1

ARITHMETICAL AVERAGE

125

125

125