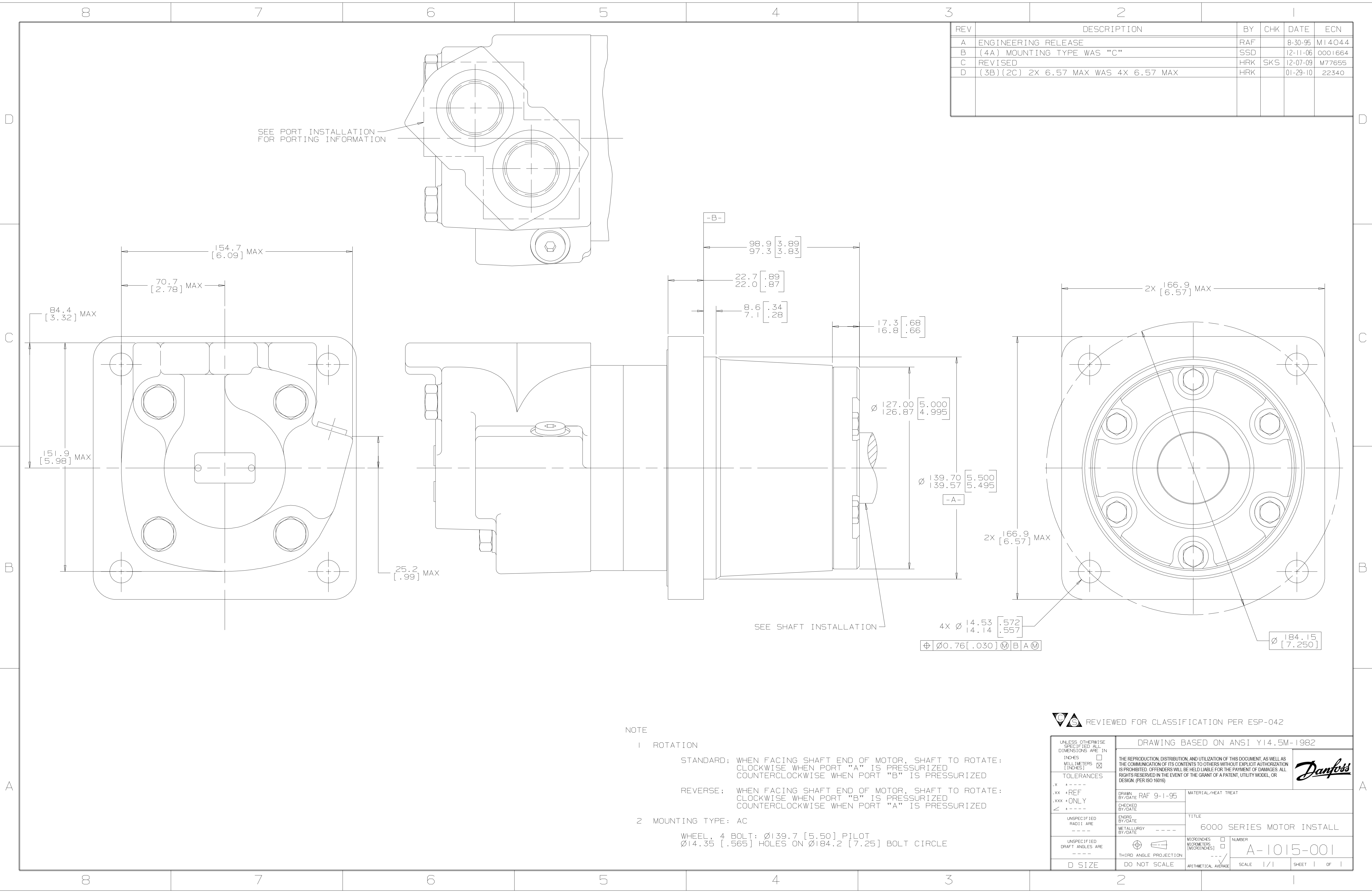


REV	DESCRIPTION	BY	CHK	DATE	ECN
A	ENGINEERING RELEASE	RAF		8-30-95	M14044
B	{4A} MOUNTING TYPE WAS "C"	SSD		12-11-06	0001664
C	REVISED	HRK	SKS	12-07-09	M77655
D	{3B}{2C} 2X 6.57 MAX WAS 4X 6.57 MAX	HRK		01-29-10	22340

SEE PORT INSTALLATION FOR PORTING INFORMATION

SEE SHAFT INSTALLATION



NOTE

- 1 ROTATION
 - STANDARD: WHEN FACING SHAFT END OF MOTOR, SHAFT TO ROTATE: CLOCKWISE WHEN PORT "A" IS PRESSURIZED COUNTERCLOCKWISE WHEN PORT "B" IS PRESSURIZED
 - REVERSE: WHEN FACING SHAFT END OF MOTOR, SHAFT TO ROTATE: CLOCKWISE WHEN PORT "B" IS PRESSURIZED COUNTERCLOCKWISE WHEN PORT "A" IS PRESSURIZED
- 2 MOUNTING TYPE: AC
 - WHEEL, 4 BOLT: Ø139.7 [5.50] PILOT Ø14.35 [.565] HOLES ON Ø184.2 [7.25] BOLT CIRCLE

REVIEWED FOR CLASSIFICATION PER ESP-042

DRAWING BASED ON ANSI Y14.5M-1982

UNLESS OTHERWISE SPECIFIED ALL DIMENSIONS ARE IN: INCHES MILLIMETERS

THE REPRODUCTION, DISTRIBUTION AND UTILIZATION OF THIS DOCUMENT, AS WELL AS THE COMMUNICATION OF ITS CONTENTS TO OTHERS WITHOUT EXPLICIT AUTHORIZATION IS PROHIBITED. OFFENDERS WILL BE HELD LIABLE FOR THE PAYMENT OF DAMAGES. ALL RIGHTS RESERVED IN THE EVENT OF THE GRANT OF A PATENT, UTILITY MODEL OR DESIGN. (PER ISO 16016)

Danfoss

DRWN BY/DATE: RAF 9-1-95 MATERIAL/HEAT TREAT: _____

CHECKED BY/DATE: _____

ENGR BY/DATE: _____ TITLE: 6000 SERIES MOTOR INSTALL

METALLURGY BY/DATE: _____

UNSPECIFIED DRAFT ANGLES ARE: _____ THIRD ANGLE PROJECTION FIRST ANGLE PROJECTION

UNSPECIFIED RADI ARE: _____

UNSPECIFIED DRAFT ANGLES ARE: _____

D SIZE DO NOT SCALE

MICROINCHES MILLIMETERS NUMBER: A-1015-001

ARTHEMETICAL AVERAGE SCALE 1/1 SHEET 1 OF 1