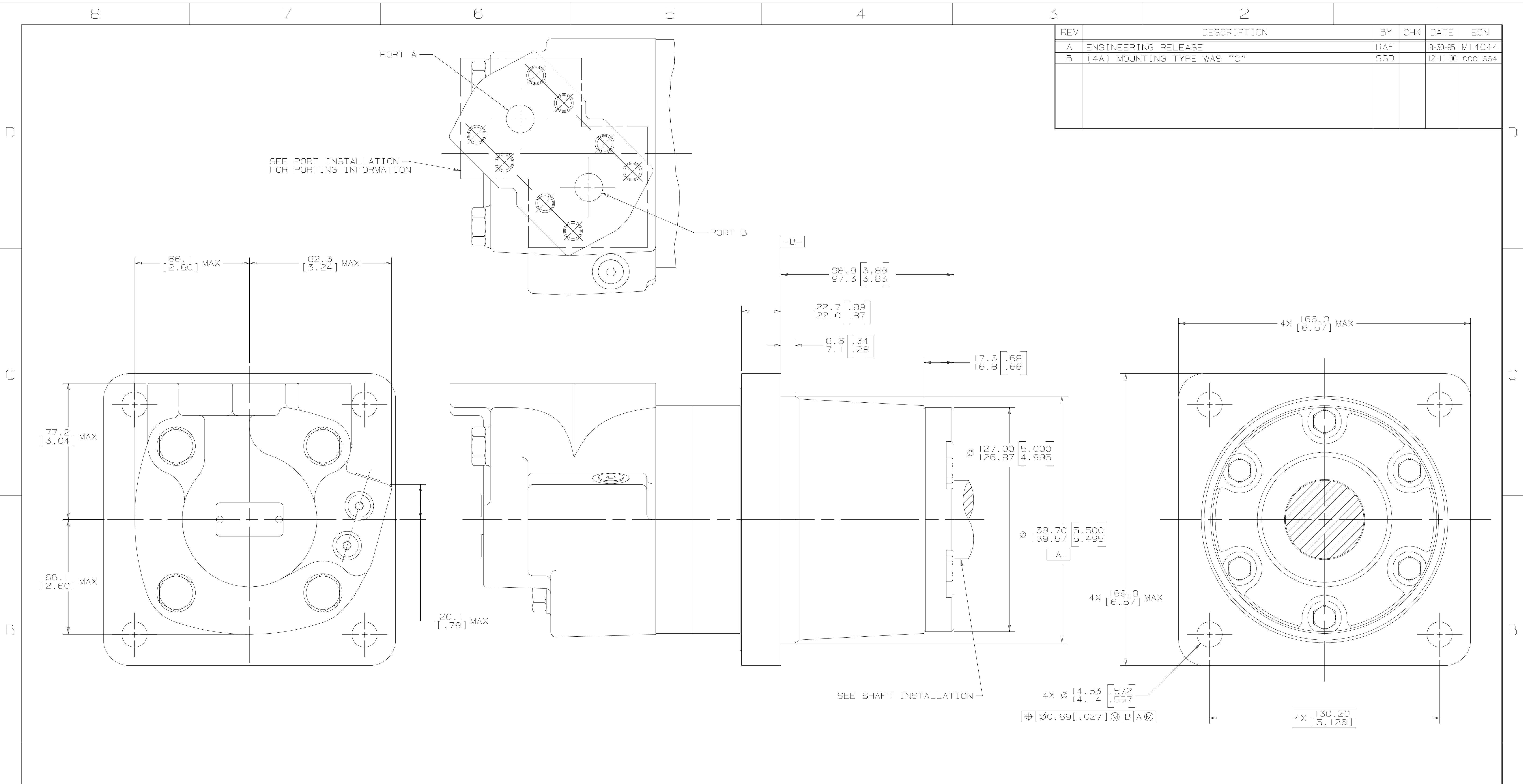


REV	DESCRIPTION	BY	CHK	DATE	ECN
A	ENGINEERING RELEASE	RAF		8-30-95	M14044
B	(4A) MOUNTING TYPE WAS "C"	SSD		12-11-06	0001664



NOTE

1 ROTATION

STANDARD: WHEN FACING SHAFT END OF MOTOR, SHAFT TO ROTATE: CLOCKWISE WHEN PORT "A" IS PRESSURIZED COUNTERCLOCKWISE WHEN PORT "B" IS PRESSURIZED

REVERSE: WHEN FACING SHAFT END OF MOTOR, SHAFT TO ROTATE: CLOCKWISE WHEN PORT "B" IS PRESSURIZED COUNTERCLOCKWISE WHEN PORT "A" IS PRESSURIZED

2 MOUNTING TYPE: AC

WHEEL, 4 BOLT:  $\phi 139.7$  [5.50] PILOT  
 $\phi 14.35$  [.565] HOLES ON  $\phi 184.2$  [7.25] BOLT CIRCLE

UNLESS OTHERWISE SPECIFIED ALL DIMENSIONS ARE IN		DRAWING BASED ON ANSI Y14.5M-1982	
INCHES <input type="checkbox"/>	MILLIMETERS <input checked="" type="checkbox"/>	THE REPRODUCTION, DISTRIBUTION, AND UTILIZATION OF THIS DOCUMENT, AS WELL AS THE COMMUNICATION OF ITS CONTENTS TO OTHERS WITHOUT EXPLICIT AUTHORIZATION IS PROHIBITED. OFFENDERS WILL BE HELD LIABLE FOR THE PAYMENT OF DAMAGES. ALL RIGHTS RESERVED IN THE EVENT OF THE GRANT OF A PATENT, UTILITY MODEL, OR DESIGN. (PER ISO 16016)	
TOLERANCES			
.x	----	DRWN BY/DATE RAF 9-1-95	MATERIAL/HEAT TREAT
.xx	+REF	CHECKED BY/DATE	
.xxx	+ONLY	UNSPECIFIED RADI ARE	TITLE
<	----	UNSPECIFIED DRAFT ANGLES ARE	6000 SERIES MOTOR INSTALL
DRAWING FORMAT CAD <input checked="" type="checkbox"/> MANUAL <input type="checkbox"/>	DO NOT SCALE	THIRD ANGLE PROJECTION	NUMBER A-1015-002
		ARITHMETICAL AVERAGE	SCALE 1/1 SHEET 1 OF 1

G K S