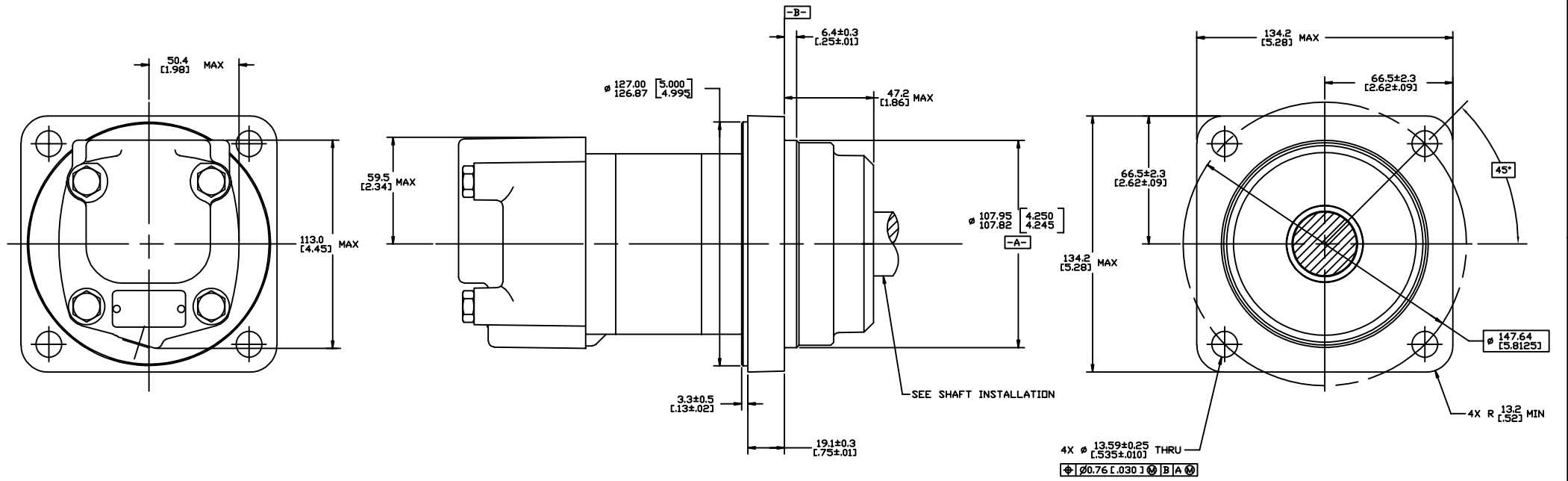
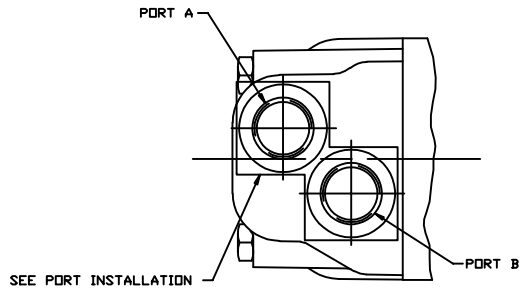


SYM	REVISION	BY	DATE	ECN
A	ENGINEERING RELEASE	RAF	4-25-93	M8096
B	REVISED	AGJ	5-26-93	22833
C	-1<(4B)ADDED Ø93.0/91.4 [3.66/3.60] -2<(4C)ADDED 21.6 [0.85]MAX -3<REVISED PICTORIALY	JMS	7-25-99	33164
D	-1<(4B)REMOVED Ø 93.0/91.4[3.66/3.60] -2<REVISED PICTORIALY -3<(4B)ADDED Ø 96.0/94.5 [3.78/3.72]	MLL	11-25-00	36676
E	<4A>NOTE 2 WAS MOUNTING TYPE: B	AGJ	5/13/02	41044
F	-1<(4B)REMOVED 96.0/94.5[3.78/3.72] -2<(4C)REMOVED 21.6[0.85]MAX.	AAK	3-2-04	46977
G	REVISED PICTORIALY	VBH	7/9/07	0008921
H	<6A> ADDED MOUNTING OPTION BP	KNR	8-18-08	M73504A
J	REVISED	VBH	5-28-09	M76048
K	-1<(1B)ADDED DIM Ø147.6[5.8125] -2<(1C)ADDED 45°	AAB	4-29-10	M79020



NOTE

1 ROTATION:
STANDARD: WHEN FACING SHAFT END OF MOTOR, SHAFT TO ROTATE) CLOCKWISE WHEN PORT 'A' IS PRESSURIZED COUNTERCLOCKWISE WHEN PORT 'B' IS PRESSURIZED
REVERSE: WHEN FACING SHAFT END OF MOTOR, SHAFT TO ROTATE) CLOCKWISE WHEN PORT 'B' IS PRESSURIZED COUNTERCLOCKWISE WHEN PORT 'A' IS PRESSURIZED

2 MOUNTING TYPE: AB,BP
WHEEL, 4 BOLT, Ø 108.0 [4.25] PILOT
Ø 13.59 [0.535] HOLES ON Ø 147.6 [5.81] BOLT CIRCLE
Ø 127.0 [5.00] REAR MOUNT PILOT

REVIEWED FOR CLASSIFICATION PER ESP-042

UNLESS OTHERWISE SPECIFIED ALL DIMENSIONS ARE IN		DRAWING BASED ON ANSI Y14.5M-1982	
INCHES	<input type="checkbox"/>	<small>THE REPRODUCTION, DISTRIBUTION, AND UTILIZATION OF THIS DOCUMENT, AS WELL AS THE COMMUNICATION OF ITS CONTENTS TO OTHERS WITHOUT EXPRESS AUTHORIZATION IS PROHIBITED. OFFENDERS WILL BE HELD LIABLE FOR THE PAYMENT OF DAMAGES. ALL RIGHTS RESERVED IN THE EVENT OF THE GRANT OF A PATENT, UTILITY MODEL, OR DESIGN. (PER ISO 10166)</small>	
MILLIMETERS	<input checked="" type="checkbox"/>		
TOLERANCES			
X * ---			
JXX * REF		DRAWN BY/DATE: RAF 4-30-93 CHECKED BY/DATE: KJR 5-3-93 DESIGNED BY/DATE: HJH 5-3-93 ESTIMATED BY/DATE: ---	MATERIAL TREAT: --- TITLE: 2000 SERIES MOTOR INSTALLATION
UNSPECIFIED DRAFT ANGLES AND		THIRD ANGLE PROJECTION DO NOT SCALE	NUMBER: A-664-001 SCALE: 1/1 SHEET: 1 OF 1