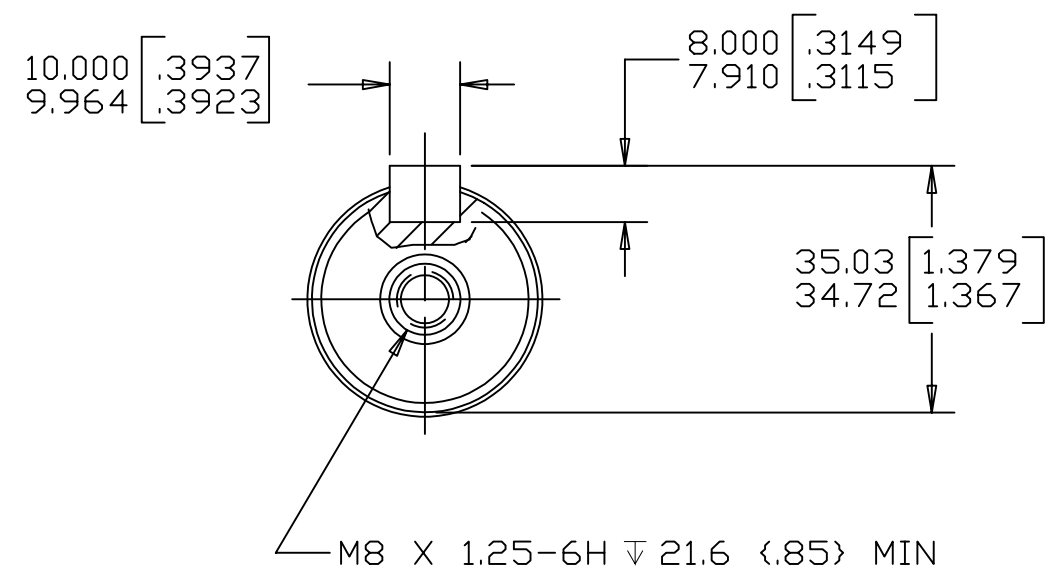
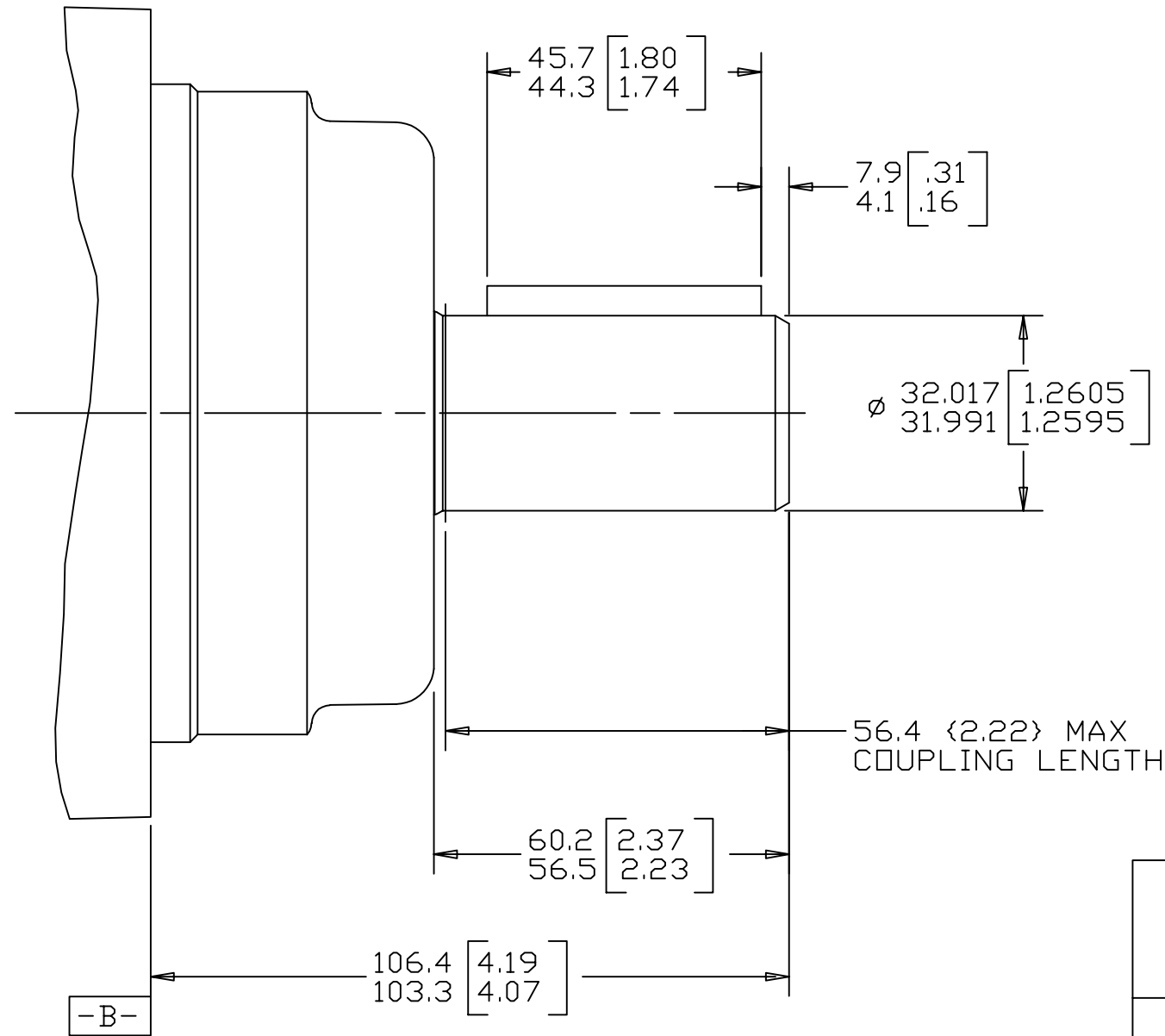


REV	DESCRIPTION	BY	DATE	ECN
A	RELEASE FOR SAMPLES AND ESTIMATES	RAF	5/4/93	X6579
G	REVISED	AGJ	5-17-04	47918
H	REVISED PICTORIALY	AAK	3-2-04	46977
J	NOTE 2 WAS OUTPUT SHAFT: OPTION 23 & 30	PM	4-4-06	54522
K	-1) 60.2/56.5(2.37/2.23) WAS 59.5/57.1 (2.34/2.25) -2) 106.4/103.3(4.19/4.07) WAS 105.7/103.6(4.16/4.08) -3)REVISED FORMAT PER CURRENT STANDARD	PRK	9-10-09	M 76778A
L	ADDED 'CB' IN NOTE 1	AAK	10-11-18	M108950



REVIEWED FOR CLASSIFICATION PER ESP-042

NOTE  
 1 MOUNTING TYPE: OPTION AB, CB  
 2 OUTPUT SHAFT: OPTION 16 & 22

UNLESS OTHERWISE SPECIFIED ALL DIMENSIONS ARE IN INCHES <input type="checkbox"/> MILLIMETERS (INCHES) <input checked="" type="checkbox"/>	DRAWING BASED ON ANSI Y14.5M-1982		 THE REPRODUCTION, DISTRIBUTION, AND UTILIZATION OF THIS DOCUMENT, AS WELL AS THE COMMUNICATION OF ITS CONTENTS TO OTHERS WITHOUT EXPLICIT AUTHORIZATION IS PROHIBITED. OFFENDERS WILL BE HELD LIABLE FOR THE PAYMENT OF DAMAGES. ALL RIGHTS RESERVED IN THE EVENT OF THE GRANT OF A PATENT, UTILITY MODEL, OR DESIGN. (PER ISO 16016)
	TOLERANCES .X ± ---- .XX ± REF .XXX ± ONLY < ± ----		
UNSPECIFIED RADII ARE ----	DRAWN BY/DATE: RAF 5/6/93 CHECKED BY/DATE: K. RANDOLPH 5-20-93 ENGRG BY/DATE: M. BERNSTROM 5-26-93 METALLURGY BY/DATE:	MATERIAL/HEAT TREAT	
UNSPECIFIED DRAFT ANGLES ARE ----	 THIRD ANGLE PROJECTION	TITLE: 2000 SERIES MOTOR SHAFT INSTALLATION	
DRAWING FORMAT CADD <input checked="" type="checkbox"/> MANUAL <input type="checkbox"/>	DO NOT SCALE	MICROINCHES <input type="checkbox"/> MICROMETERS (MICROINCHES) <input checked="" type="checkbox"/> ARITHMETICAL AVERAGE <input checked="" type="checkbox"/>	NUMBER: A-682-023 SCALE: 1/1 SHEET 1 OF 1