

MOUNTING TYPE AC,AF,AH,AN,AS,AV,AU,AY,BA,BE,BD

MOUNTING TYPE AJ & BC

DISP C E MAX

DISP C E MAX

049	136.1-137.7 [5.36-5.42]	184.2 [7.25]
055	138.4-140.0 [5.45-5.51]	186.5 [7.34]
062	140.7-142.3 [5.54-5.60]	188.9 [7.44]
080	147.1-148.8 [5.79-5.86]	195.3 [7.69]
096	147.1-148.8 [5.79-5.86]	195.3 [7.69]
119	153.9-155.5 [6.06-6.12]	202.0 [7.95]
149	162.9-164.5 [6.41-6.48]	211.1 [8.31]
187	174.3-175.9 [6.86-6.93]	222.5 [8.76]
240	190.2-191.9 [7.49-7.55]	238.4 [9.39]
298	207.6-209.3 [8.17-8.24]	255.8 [10.07]

049	139.6-141.8 [5.50-5.58]	188.3 [7.41]
055	141.9-144.1 [5.59-5.67]	190.6 [7.50]
062	144.3-146.4 [5.68-5.76]	192.9 [7.60]
080	150.7-152.8 [5.93-6.02]	199.4 [7.85]
096	150.7-152.8 [5.93-6.02]	199.4 [7.85]
119	157.4-159.6 [6.20-6.28]	206.1 [8.11]
149	166.5-168.6 [6.55-6.64]	215.1 [8.47]
187	177.8-180.0 [7.00-7.09]	226.5 [8.92]
240	193.8-195.9 [7.63-7.71]	242.4 [9.55]
298	211.2-213.3 [8.31-8.40]	259.8 [10.23]

MOUNTING TYPE 00 (E)

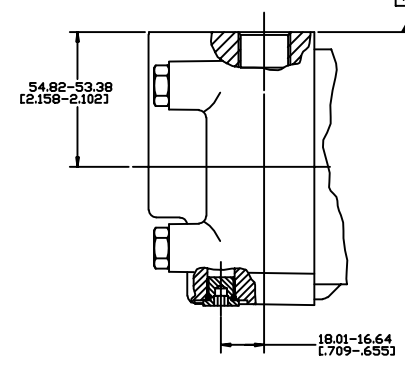
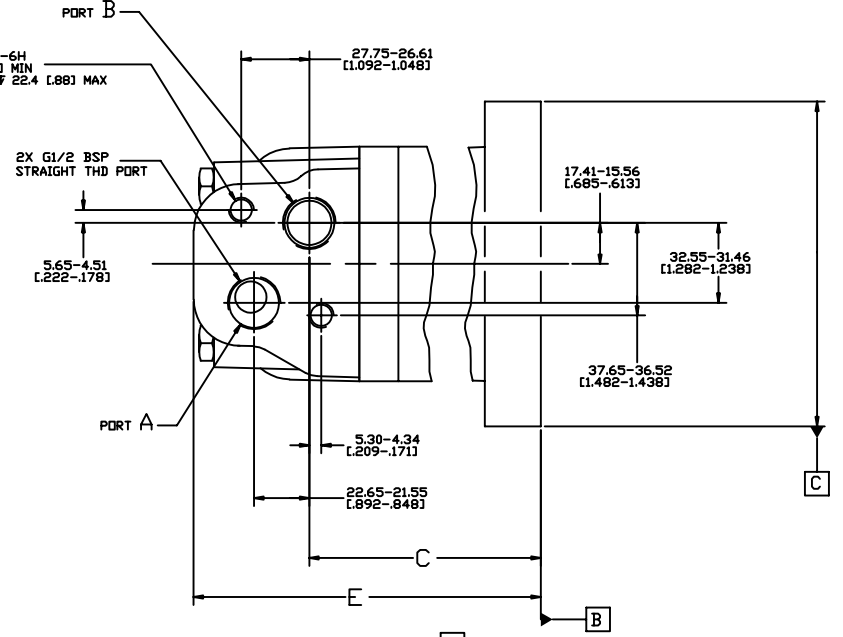
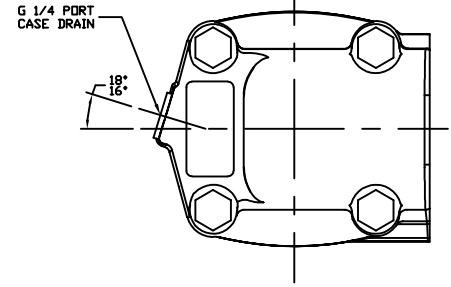
MOUNTING TYPE AL (G)

DISP C E MAX

DISP C E MAX

049	73.8-75.0 [2.91-2.95]	121.5 [4.78]
055	76.1-77.3 [3.00-3.04]	123.8 [4.87]
062	78.5-79.6 [3.09-3.13]	126.1 [4.97]
080	84.9-86.0 [3.34-3.39]	132.6 [5.22]
096	84.9-86.0 [3.34-3.39]	132.6 [5.22]
119	91.6-92.8 [3.61-3.65]	139.3 [5.48]
149	100.7-101.8 [3.96-4.01]	148.3 [5.84]
187	112.1-113.2 [4.41-4.46]	159.7 [6.29]
240	128.0-129.1 [5.04-5.08]	175.6 [6.92]
298	145.4-146.5 [5.72-5.77]	193.0 [7.60]

049	98.0-99.6 [3.86-3.92]	146.1 [5.75]
055	100.3-101.9 [3.95-4.01]	148.4 [5.84]
062	102.6-104.2 [4.04-4.10]	150.8 [5.94]
080	109.0-110.7 [4.29-4.36]	157.2 [6.19]
096	109.0-110.7 [4.29-4.36]	157.2 [6.19]
119	115.8-117.4 [4.56-4.62]	163.9 [6.45]
149	124.8-126.4 [4.91-4.98]	173.0 [6.81]
187	136.2-137.8 [5.36-5.43]	184.4 [7.26]
240	152.1-153.8 [5.99-6.05]	200.3 [7.89]
298	169.5-171.2 [6.67-6.74]	217.7 [8.57]



NOTE
 1 PORT OPTION AS
 2 CASE FLOW OPTION 02

REVIEWED FOR CLASSIFICATION PER ESP-042

DRAWING BASED ON ASME Y14.5M-1994

UNLESS OTHERWISE SPECIFIED ARE IN INCHES

TOLERANCES

XX & REF	ASME AGJ 11-11-97	NATURAL/NEAT TREAT
XXX & DIMLY	ASME RAF 11-18-97	
UNSPECIFIED HOLE ARE	ASME JDN 11-18-97	TITLE 2000 SERIES MOTOR PORT INSTALLATION
UNSPECIFIED DRAFT ANGLES ARE	BY/DATE	NUMBER A-673-019
D SIZE	DO NOT SCALE	SCALE 1/1 SHEET 1 OF 1

THE REPRODUCTION, DISTRIBUTION AND UTILIZATION OF THIS DOCUMENT, AS WELL AS THE COMMUNICATION OF ITS CONTENTS TO OTHERS WITHOUT EXPLICIT AUTHORIZATION IS PROHIBITED. OFFENDERS WILL BE HELD LIABLE FOR THE PAYMENT OF DAMAGES. ALL RIGHTS RESERVED IN THE EVENT OF A PATENT, UTILITY MODEL, OR DESIGN (PERIOD 10/00)

Danfoss

REV	DESCRIPTION	BY	CHK	DATE	ECN
A	ENGINEERING RELEASE	AGJ		10-15-97	M18475
B	-1)REVISED MOUNTING TAB CODES -2)NOTE 1 WAS PORT OPTION 2 -2)ADDED NOTE 2	AGJ		5-13-02	41044
C	REVISED TABULATION BLOCKS	AGJ		5-17-04	47918
D	REVISED DISPLACEMENT FOR TABULATION BLOCKS	RG		6-26-06	56090
E	(8C) ADDED MOUNTING TYPE 00 IN TABULATION BLOCK	KNR		6-26-06	M73272
F	(8C) WAS 3X M10 X 1.5-6H	NPB		7-08-08	0010669
G	(7C) ADDED TAB MOUNTING TYPE AL	CSG	AMM	02-26-09	M75379
H	REVISED	PRK	HRK	0-5-09	18334
J	(3B)5.30-4.34/[2.09-1.71] WAS 6.16-5.02/[2.42-1.98]	SMT		11-13-10	22069
K	-1)XSCADDED LHS VIEW AND RELATED DIMENSION/NOTE -2)UPDATED DRAWING AS PER ASME Y14.5M 1994 STANDARD	AAB	CSG	12-22-11	M84268