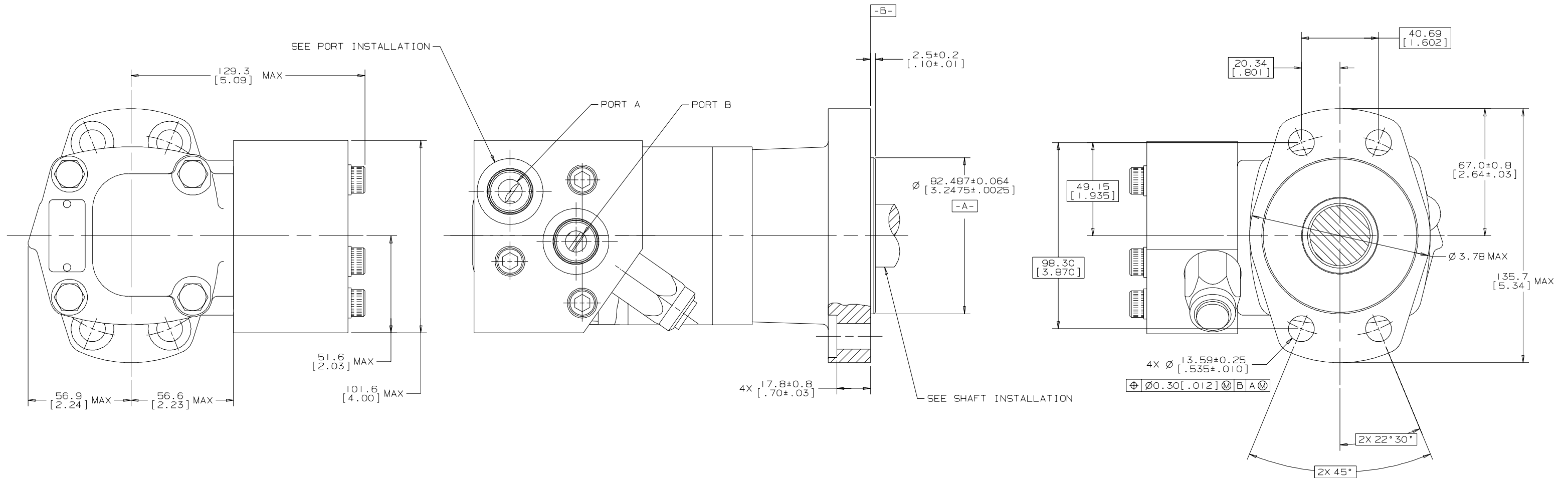


REV	DESCRIPTION	BY	CHK	DATE	ECN
A	ENGINEERING RELEASE	AGJ		10-12-01	M26475
B	(4A)NOTE 2 WAS MOUNTING TYPE: J	AGJ		5-13-02	41044



NOTE

- 1 ROTATION:
 STANDARD: WHEN FACING SHAFT END OF MOTOR, SHAFT TO ROTATE;
 CLOCKWISE WHEN PORT "A" IS PRESSURIZED
 COUNTERCLOCKWISE WHEN PORT "B" IS PRESSURIZED
- REVERSE: WHEN FACING SHAFT END OF MOTOR, SHAFT TO ROTATE;
 CLOCKWISE WHEN PORT "B" IS PRESSURIZED
 COUNTERCLOCKWISE WHEN PORT "A" IS PRESSURIZED
- 2 MOUNTING TYPE: AJ
 STANDARD (MAGNETO), 4 BOLT: Ø 82.6 [3.25] PILOT
 Ø 13.59 [.535] HOLES ON Ø 106.4 [4.19] BOLT CIRCLE
 2.79 [.110] PILOT LENGTH

G K S

UNLESS OTHERWISE SPECIFIED ALL DIMENSIONS ARE IN		DRAWING BASED ON ANSI Y14.5M-1982	
INCHES <input type="checkbox"/>	MILLIMETERS <input checked="" type="checkbox"/>	THE REPRODUCTION, DISTRIBUTION, AND UTILIZATION OF THIS DOCUMENT, AS WELL AS THE COMMUNICATION OF ITS CONTENTS TO OTHERS WITHOUT EXPLICIT AUTHORIZATION IS PROHIBITED. OFFENDERS WILL BE HELD LIABLE FOR THE PAYMENT OF DAMAGES. ALL RIGHTS RESERVED IN THE EVENT OF THE GRANT OF A PATENT, UTILITY MODEL, OR DESIGN. (PER ISO 1019)	
TOLERANCES			
.X	----		
.XX	----	DRAWN BY/DATE AGJ 10-16-01 CHECKED BY/DATE MLL 10-17-01	MATERIAL/HEAT TREAT
UNSPECIFIED RADIi ARE	----	ENGR BY/DATE TRF 10-17-01	TITLE
UNSPECIFIED DRAFT ANGLES ARE	----	METALLURGY BY/DATE	2000 SERIES MOTOR INSTALLATION
DRAWING FORMAT CAD <input checked="" type="checkbox"/> MANUAL <input type="checkbox"/>	THIRD ANGLE PROJECTION <input checked="" type="checkbox"/>	DO NOT SCALE	WIDTH INCHES (MILLIMETERS) <input type="checkbox"/> NUMBER A-671-023
		ARITHMETICAL AVERAGE <input checked="" type="checkbox"/>	SCALE 1/1 SHEET 1 OF 1