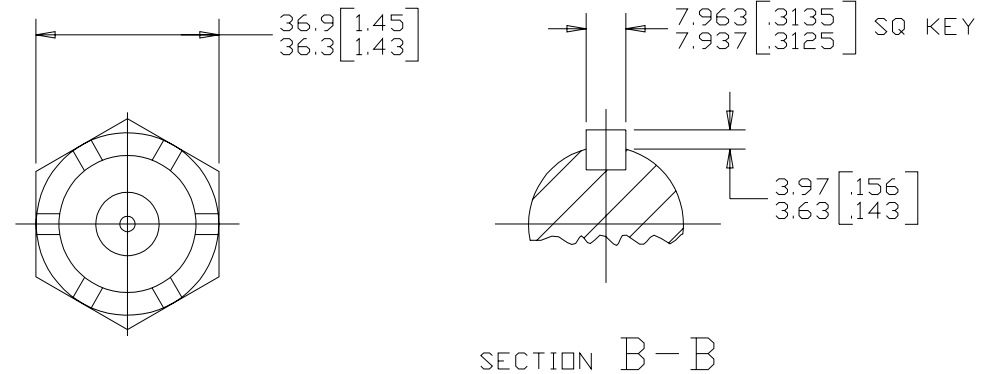
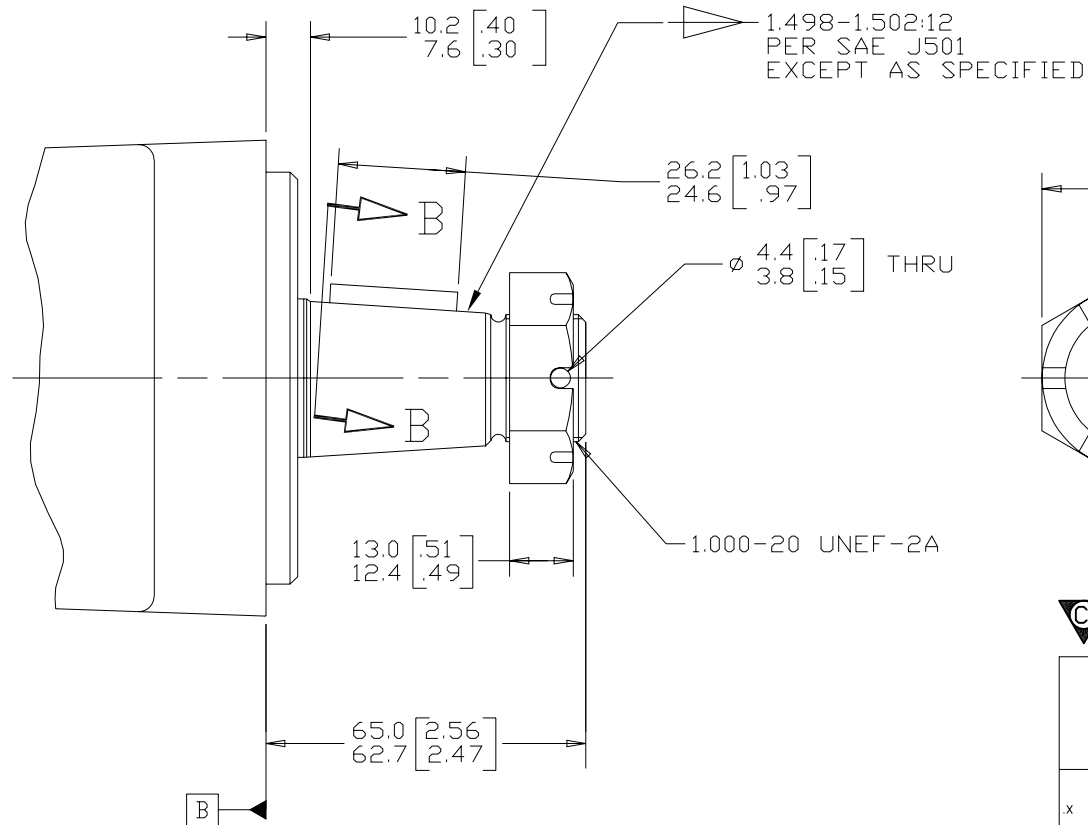


REV	DESCRIPTION	BY	DATE	ECN
A	ENGINEERING RELEASE	AGJ	5-26-93	22833
B	NOTE 1 WAS MOUNTING TYPE: OPTION C	AGJ	5-13-02	41044
C	ADDED 10.2/7.6 [.40/.30]	AGJ	8-30-01	39045
D	65.0/62.7 [2.56/2.47] WAS 65.3/62.7 [2.57/2.47]	AGJ	5-17-04	47918
E	NOTE 2 WAS "OUTPUT SHAFT.."	SKS	3-20-06	M66923
F	NOTE 2 WAS OUTPUT SHAFT: OPTION 03,25 & 44	PM	4-4-06	54522
G	REMOVED OUTPUT SHAFT OPTION "44"	AAK	1-2-07	55805
H	-1>REMOVED REDUNDANT DIM 65.3 [2.57] 62.7 [2.47] -2>UPDATED DRAWING TO ASME Y14.5M 1994 STANDARD	AAB	05-22-12	M85721



NOTE

- 1 MOUNTING TYPE: OPTION AC, BA & BE
- 2 OUTPUT SHAFT: OPTION 03,18

CS REVIEWED FOR CLASSIFICATION PER ESP-042

UNLESS OTHERWISE SPECIFIED ALL DIMENSIONS ARE IN INCHES <input type="checkbox"/> MILLIMETERS <input checked="" type="checkbox"/> TOLERANCES X ± ---- XX ± REF XXX ± ONLY < ± ----	DRAWING BASED ON ASME Y14.5M-1994		
	THE REPRODUCTION, DISTRIBUTION, AND UTILIZATION OF THIS DOCUMENT, AS WELL AS THE COMMUNICATION OF ITS CONTENTS TO OTHERS WITHOUT EXPLICIT AUTHORIZATION IS PROHIBITED. OFFENDERS WILL BE HELD LIABLE FOR THE PAYMENT OF DAMAGES. ALL RIGHTS RESERVED IN THE EVENT OF THE GRANT OF A PATENT, UTILITY MODEL, OR DESIGN. (PER ISO 16016)		
UNSPECIFIED RADII ARE ---- METALLURGY BY/DATE ----	ENGRG BY/DATE SJZ 6-28-93 METALLURGY BY/DATE ----	MATERIAL/HEAT TREAT TITLE 2000 SERIES MOTOR SHAFT INSTALLATION	
UNSPECIFIED DRAFT ANGLES ARE ---- C SIZE	THIRD ANGLE PROJECTION DO NOT SCALE	MICROINCHES <input type="checkbox"/> MICROMETERS <input type="checkbox"/> ARITHMETICAL AVERAGE <input checked="" type="checkbox"/>	NUMBER A-683-003 SCALE 1/1 SHEET 1 OF 1