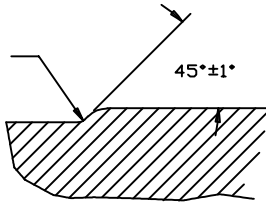
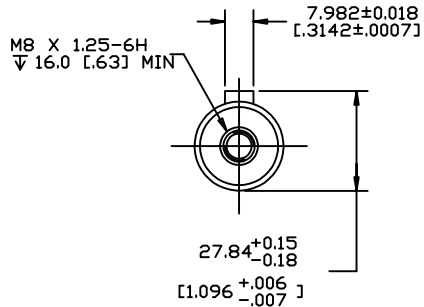


R 0.51±0.25
[.020±.010]



VIEW W
SCALE 5/1



∇	0.26 [.010]	E
\perp	0.08 [.003]	F

43.2±0.8
[1.70±.03]

31.85±0.15
[1.254±.006]

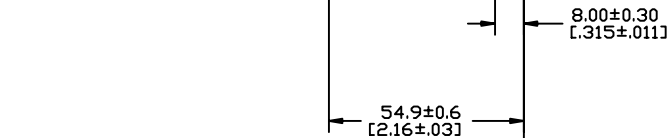
5.4±1.0
[.21±.04]

SEE VIEW W

∅ 35.0
[1.38] MIN

∅ 25.000^{+0.015}_{-0.002}
[.9843^{+0.0006}_{-.0001}]

REV	DESCRIPTION	BY	DATE	ECN
A	ENGINEERING RELEASE	RAF	5/11/93	24074
B	(2B) DIM 54.9±0.5 [2.16±.02] WAS 54.4±0.8 [2.14±.03]	JMM	10/18/94	25844
C	(3A)ADDED SHAFT OPTION 52	AGJ	9-15-95	M14167
D	(3A)ADDED OPTION "V" TO NOTE 2	RAF	10-24-95	27432
E	(4D)ADDED VIEW "W"	AAK	7/08/2005	M64867B
F	(4D) DIM R 0.51±0.25 [.020±.010] WAS R.020±.010	PM	8/05/2005	52410
G	-1)(2B)54.9±0.6 [2.16±.03] WAS 54.9±0.5 [2.16±.02] -2)(3A) NOTE 1 REMOVED OPTION "52" -3)(3A) NOTE 2 WAS "MOUNTING TYPE: OPTION M & V" -4)(4C)...∇ 16.0 (.63) WAS ∇ 18.0 (.71) -5)(2A) ADDED C OF C NOTE -6) (3C) (.21±.04) WAS (.213±.040) -7)(2B) 8.00±0.30 WAS 8.0±0.3	CSG	06/10/2011	M79365



REVIEWED FOR CLASSIFICATION PER ESP-042

NOTE

- 1 OUTPUT SHAFT: OPTION 39
- 2 MOUNTING TYPE: OPTION MA, MN, NA

UNLESS OTHERWISE SPECIFIED ALL DIMENSIONS ARE IN INCHES <input type="checkbox"/> MILLIMETERS <input checked="" type="checkbox"/>		DRAWING BASED ON ANSI Y14.5M-1982	
TOLERANCES X ± ---- XX ± REF XXX ± ONLY ∠ ± ----		THE REPRODUCTION, DISTRIBUTION, AND UTILIZATION OF THIS DOCUMENT, AS WELL AS THE COMMUNICATION OF ITS CONTENTS TO OTHERS WITHOUT EXPLICIT AUTHORIZATION IS PROHIBITED. OFFENDERS WILL BE HELD LIABLE FOR THE PAYMENT OF DAMAGES. ALL RIGHTS RESERVED IN THE EVENT OF THE GRANT OF A PATENT, UTILITY MODEL, OR DESIGN. (PER ISO 15918)	
UNSPECIFIED RADII ARE ----		DRAWN BY/DATE RAF 5/13/93	MATERIAL/HEAT TREAT
UNSPECIFIED DRAFT ANGLES ARE ----		CHECKED A JOHNSON BY/DATE 5-24-93	TITLE SHAFT INSTALLATION
C-SIZE		ENGR R ANDERSON BY/DATE 5-25-93	
THIRD ANGLE PROJECTION		METALLURGY BY/DATE	MICROINCHES <input type="checkbox"/> MILLIMETERS (DECIMAL INCHES) <input type="checkbox"/> ARITHMETICAL AVERAGE <input checked="" type="checkbox"/>
DO NOT SCALE		SCALE 1/1	

Danfoss