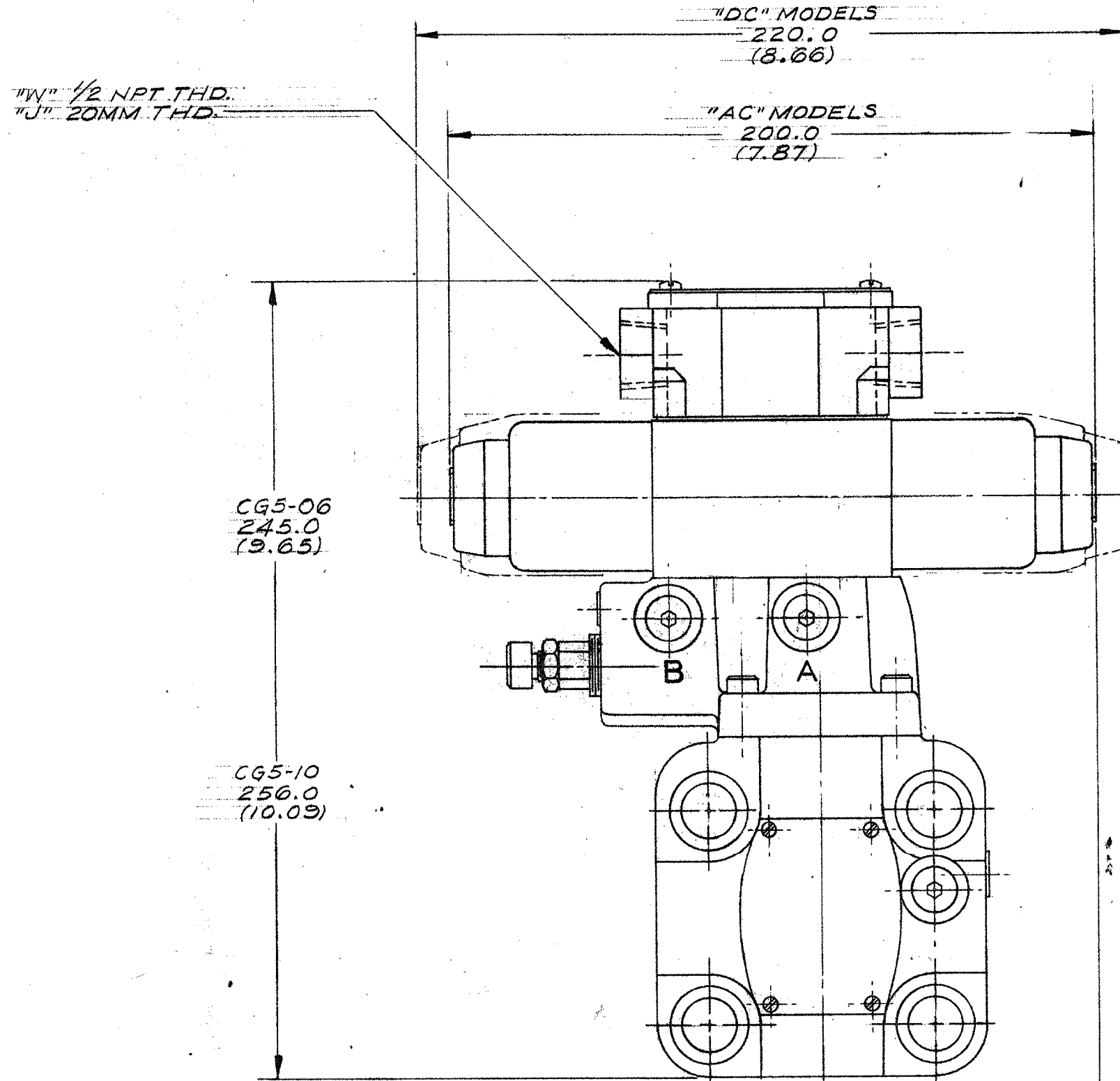


REVISIONS				
SYM	ZONE	DESCRIPTION	DATE	APPROVED
A	ZA	REMOVED HAZARDOUS DUTY FROM TANK PRESSURE RATING	10 JUL 91	DJD CWB
B		REPLACED "VICKERS" WITH "DANFOSS"	04MAY23	DG 04MAY23



"W" 1/2 NPT THD.
"J" 20MM THD.

"DC" MODELS
220.0
(8.66)

"AC" MODELS
200.0
(7.87)

CG5-06
245.0
(9.65)

CG5-10
256.0
(10.09)

- CG5-06 → 86.0 (3.38)
- CG5-10 → 84.0 (3.32)
- CG5-06 → 96.0 (3.78)
- CG5-10 → 94.0 (3.72)

MAXIMUM TANK LINE PRESSURE:

EXTERNAL DRAIN	210 bar (3000 PSI)
INTERNAL DRAIN	10 bar (145 PSI)
SWITCH MODELS (S)	10 bar (145 PSI)
A.C. MODELS	2160 bar (2285 PSI)
D.C. MODELS	210 bar (3000 PSI)

02-134657

METRIC
(INCH)

REFER TO CATALOG FOR ELECTRICAL PERFORMANCE SPECIFICATIONS OF PILOT VALVE
REFER TO DWG. J-681244 FOR RELIEF VALVE INSTALLATION DIMENSIONS
REFER TO DWG. E-508190 FOR ADDITIONAL CGO DESIGN DGAVE3 PILOT VALVE DIMENSIONS

G.T. CODE NO.		MODEL (F2) CG5-(H)-06/10XX-X(N)-XX-M-(SX)-XXXX(L)-X-X-110	
UNLESS OTHERWISE SPECIFIED INTERPRET PER VS 1-3-3-1		THIRD ANGLE PROJECTION	REF: 02-126426
ANGULAR DIMENSIONS 32°		MATERIAL	DWN: R. HARRIS 26 OCT 90
SURFACE ROUGHNESS 3.2um 125um			CHK: S. DEVAN 14 JAN 91
TOLERANCE: ON DECIMALS		HEAT TREATMENT	MFG. REV.
1 PLACE 2 PLACE 3 PLACE		COATING/PLATING	R.T.O.
mm	±0.8 ±0.25		L. PROTO.
INCH	±.03 ±0.10		S
REMOVE BURRS			E. PROD. 14 JAN 91
BREAK EDGES 0.25mm .010 in. MAX.			ENGRG. APPVL
ALL TECHNICAL DATA DISCLOSED HEREIN IS THE PROPERTY OF DANFOSS INCORPORATED AND SHALL NOT BE USED BY OTHERS FOR MANUFACTURE, PROCUREMENT, OR DISCLOSURE WITHOUT THE WRITTEN PERMISSION OF THE OWNER.			
TITLE: INSTALLATION DWG 3/4" AND 1/4" SOLENOID CONTROLLED RELIEF VALVE (SUBPLATE MOUNTED) WITH -60 DES. DGAVE3 PILOT		SIZE: D	FSCM NO. 02-134657
SCALE: 1/1		WT.	SHEET 7 OF 7